

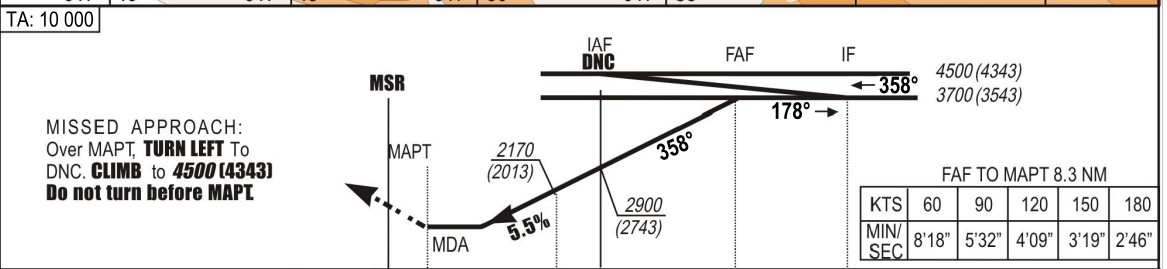
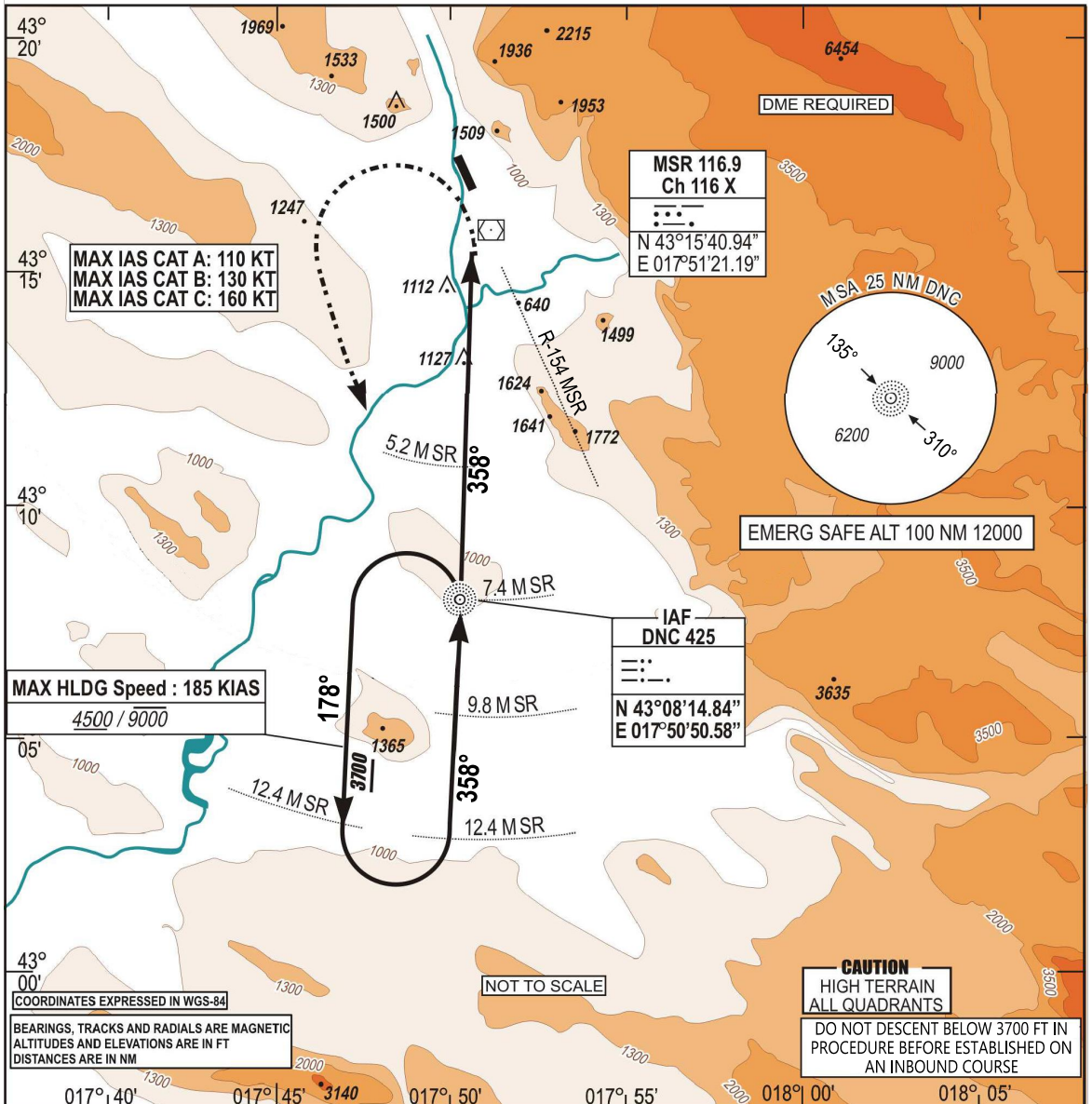
**INSTRUMENT  
APPROACH  
CHART - ICAO**

AERODROM ELEV 174 FT  
HEIGHTS RELATED TO  
THR RWY 33 ELEV 157 FT

TRANSITION  
ALTITUDE  
10 000 FT  
VAR 5°E (2020)

APP 120.225  
129.875  
TWR 125.550  
ATIS 126.225

**MOSTAR (LQMO)  
NDBa RWY 33**



VOR (DME) ← (NM)	0	1.5	5.2	7.4	9.8	12.4
THR ← (NM)	0.7	2.2	5.9	8.1	10.5	13.1

**OCA (H) published in feet**

CAT	S-NDB + CIRCLING(*) 33 Missed APP 2.5%	S-NDB + CIRCLING(*) 33 Missed APP 3.0%	S-NDB + CIRCLING(*) 33 Missed APP 4.0%	S-NDB + CIRCLING(*) 33 Missed APP 5.0%	*CIRCLING NOT AUTHORIZED EAST OF RWY 15/33
	<b>OCA (H)</b>	<b>OCA (H)</b>	<b>OCA (H)</b>	<b>OCA (H)</b>	
A	<b>2090</b> (1933)	<b>2060</b> (1903)	<b>1990</b> (1833)	<b>1950</b> (1793)	
B	<b>2110</b> (1953)	<b>2080</b> (1923)	<b>2020</b> (1863)	<b>1960</b> (1803)	
C	<b>2140</b> (1983)	<b>2120</b> (1963)	<b>2070</b> (1913)	<b>2020</b> (1863)	

REF Elev: **ALT THR**

CHG: MAG VAR

**THIS PAGE INTENTIONALLY LEFT BLANK**