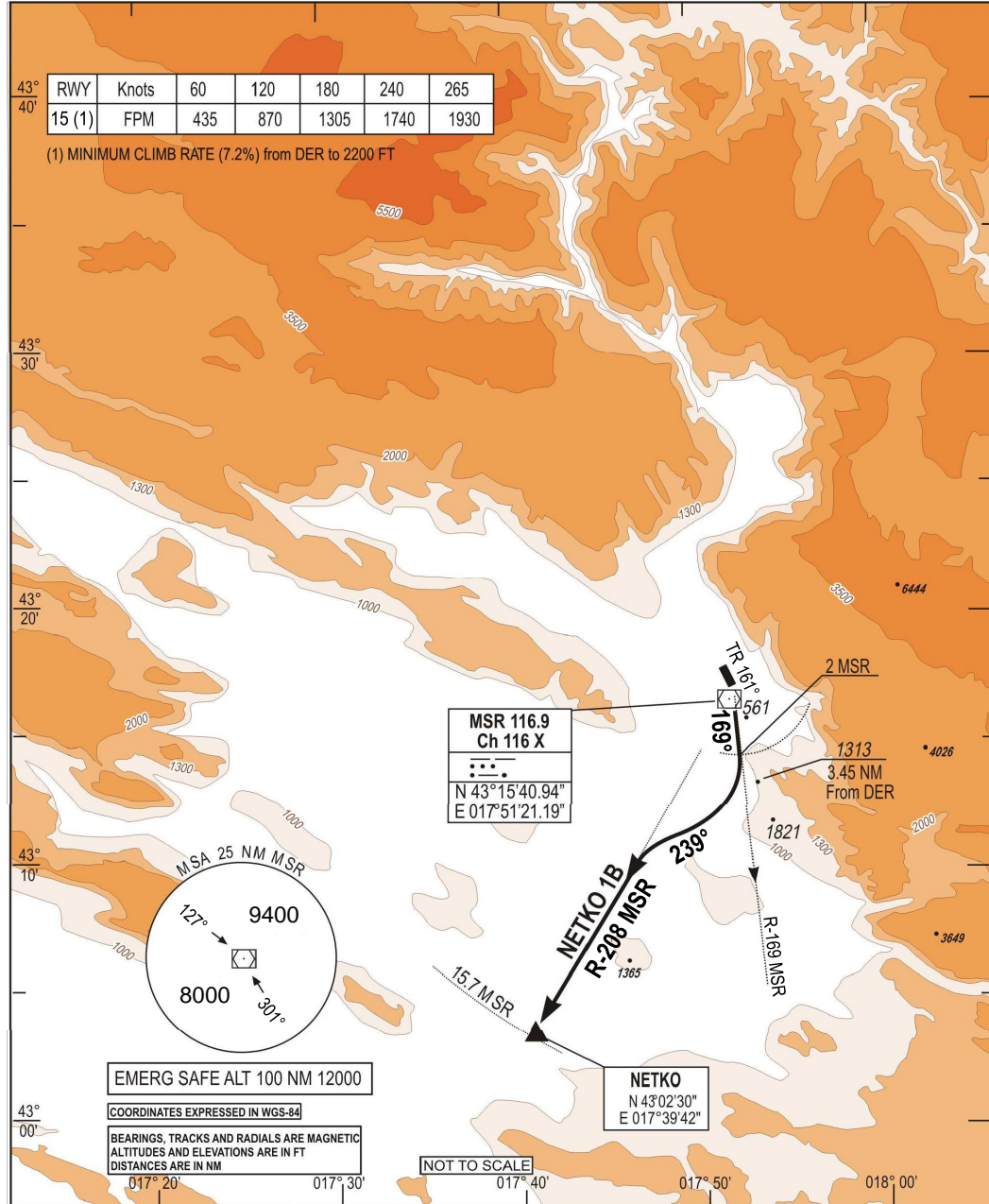


**STANDARD DEPARTURE CHART  
INSTRUMENT (SID) - ICAO**

TRANSITION  
ALTITUDE  
10 000 FT  
VAR 5°E (2020)

APP 120.225  
129.875  
TWR 125.550  
ATIS 126.225

**MOSTAR (LQMO)  
NETKO 1B RWY 15**



CHG: MSA UPDATED

SID	DEPARTURE ROUTE DESCRIPTION
NETKO 1B (RWY 15)	<ul style="list-style-type: none"> <li>- After DER, climb TR 161° then R-169 MSR (1)</li> <li>(1) Minimum climb rate : 7.2% from DER to 2200 FT</li> <li>- At 2.0 D MSA, turn right on track 239°</li> <li>- Intercept R-208 MSA outbound direct to NETKO</li> <li>- Then as directed by ATC</li> </ul>

THIS PAGE INTENTIONALLY LEFT BLANK