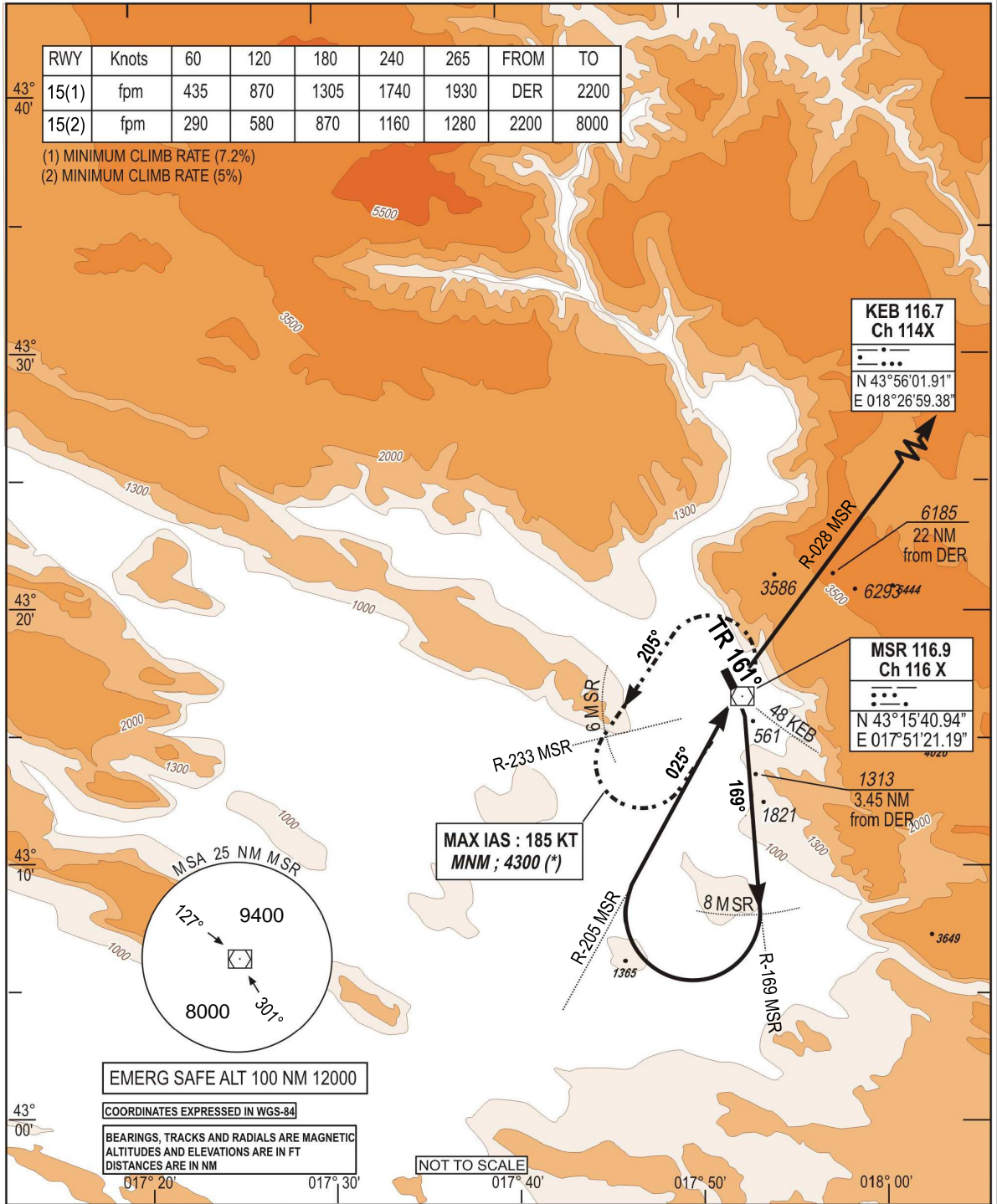


**STANDARD DEPARTURE CHART
INSTRUMENT (SID) - ICAO**

TRANSITION
ALTITUDE
10 000 FT
VAR 5°E (2020)

APP 120.225
129.875
TWR 125.550
ATIS 126.225

**MOSTAR (LQMO)
KEB 1B RWY 15**



CHG: MAG VAR;

SID	DEPARTURE ROUTE DESCRIPTION
KEB 1B (RWY 15)	<p>- After DER. Climb (1) TR 161° then R-169 MSR - At 8.0 D MSR, turn right to intercept R-205 MSR inbound direct to MSR. - Turn right to intercept R-028 MSR direct to KEB. - Then as directed by ATC.</p> <p>(1) Minimum climb rate : 7.2% from DER to 2200 ft then 5.0% until 8000 ft (*) (*) Rescue pattern climb : Over 2200 ft, if minimums climb rate not possible above 2200 ft, climb standard rate (3.3%) until MSR, then climb in holding pattern. At 8000 ft direct to KEB.</p>

THIS PAGE INTENTIONALLY LEFT BLANK