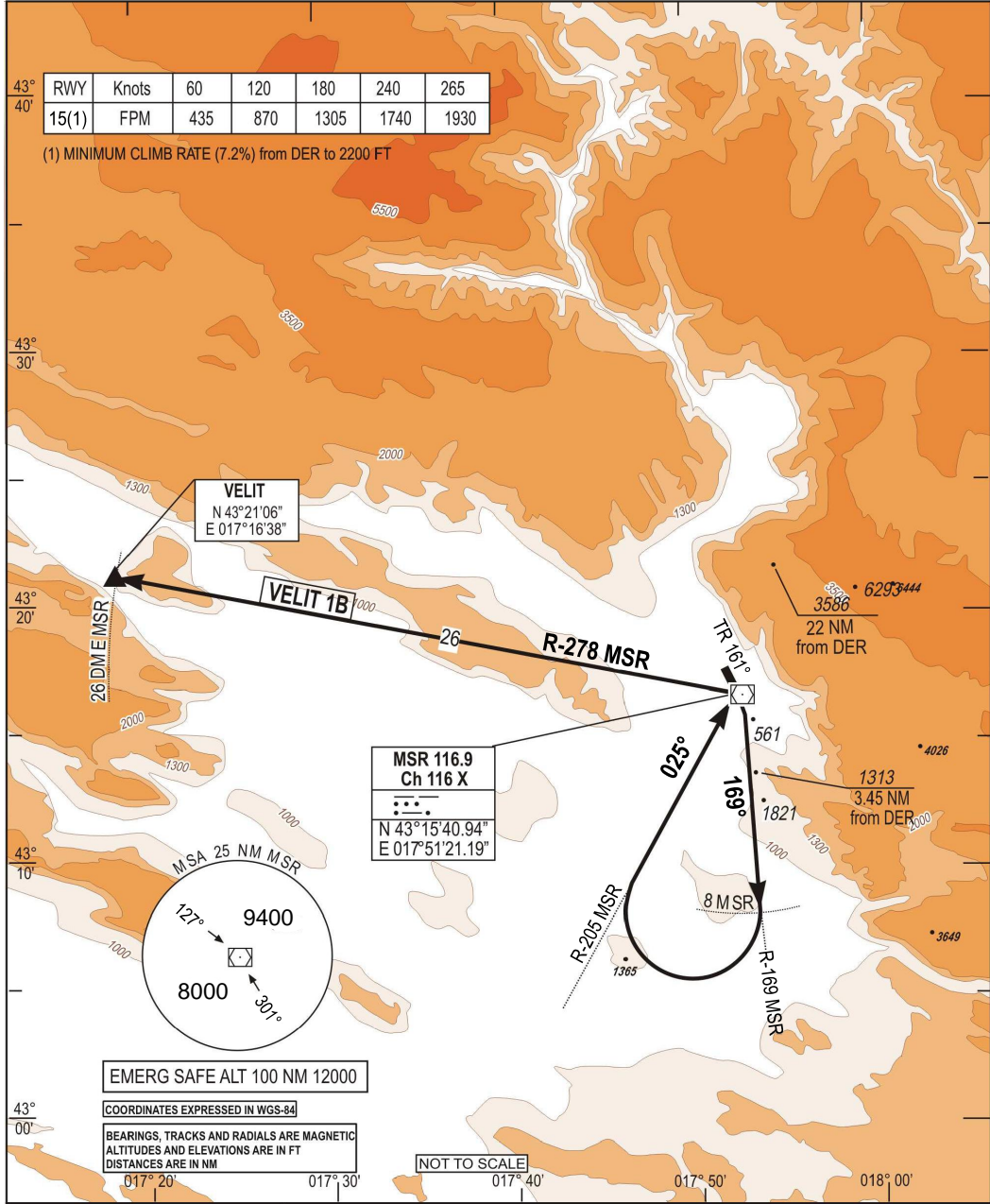


**STANDARD DEPARTURE CHART  
INSTRUMENT (SID) - ICAO**

TRANSITION  
ALTITUDE  
10 000 FT  
VAR 5°E (2020)

APP 120.225  
129.875  
TWR 125.550  
ATIS 126.225

**MOSTAR (LQMO)  
VELIT 1B RWY 15**



SID	DEPARTURE ROUTE DESCRIPTION
VELIT 1B (RWY 15)	<ul style="list-style-type: none"> <li>- After DER, climb(1)on TR 161° then R-169 MSR</li> <li>(1)Minimum climb rate : 7.2% from DER to 2200 FT</li> <li>- At 8.0 D MSR , turn right to intercept R-205 MSR inbound direct to MSR.</li> <li>- Over MSR, turn left to intercept R-278 MSR direct to VELIT</li> <li>- Then as directed by ATC.</li> </ul>

CHG: MSA PDATED

THIS PAGE INTENTIONALLY LEFT BLANK