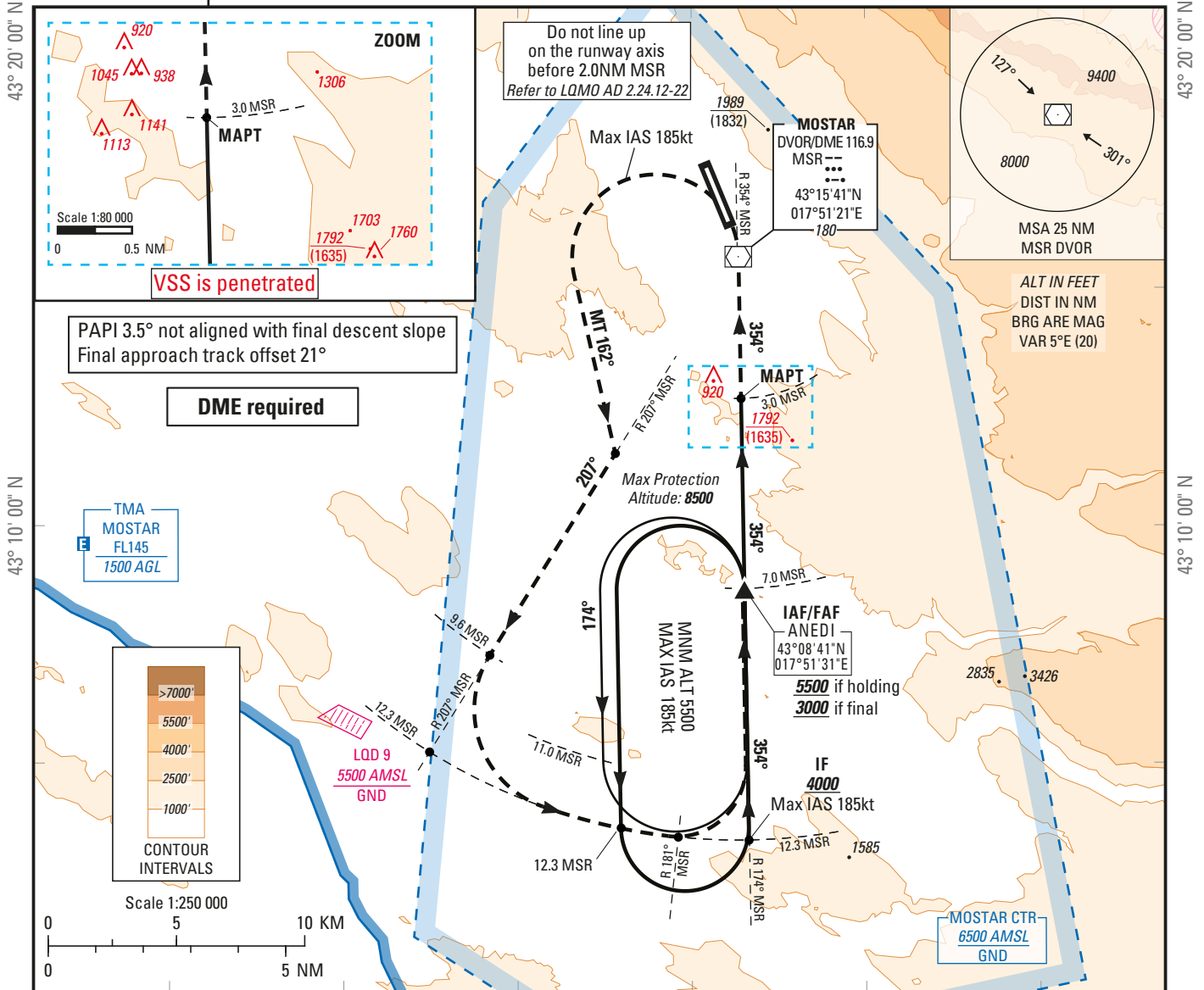


**INSTRUMENT
APPROACH
CHART— ICAO
CAT A B C**

AERODROME ELEV 174
HEIGHTS RELATED TO
THR RWY 33 - ELEV 157

TWR 125.550
APP 120.225
129.875
ATIS 126.225

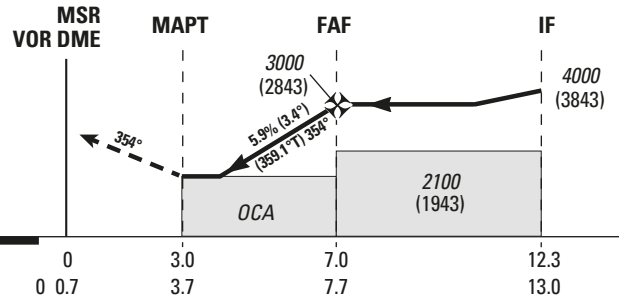
**MOSTAR / MOSTAR (LQMO)
VOR RWY 33**



TRANSITION ALT 10 000

Missed Approach:
Climb on **R 174°MSR (354°M)** until **MSR**. At **MSR**, turn **left** heading **162°M** to intercept and follow **R 207°MSR (207°M)**, then intercept and follow **R 174°MSR (354°M)** until **7.0 MSR** to hold over **ANEDI** at or above **5500 (5343)**.
MAX IAS 185 kt. At **ANEDI**, hold and follow ATC instructions.

THR ELEV 157 TCH 49



DME MSR ← (NM)
THR33 ← (NM)

MNM AD: Vertical distances in feet

REF HGT: THR ELEV

	VORDME	Circling (1)	(1) Circling are prohibited East side of the runway 15/33						
CAT	OCA (H)	OCA (H)	DIST MSR						
A	1950 (1790)	2290 (2130)	NM	5	6				
B		2290 (2130)	ALT	2280	2640				
C		2390 (2230)	(HGT)	(2123)	(2483)				
FAF - MAPT (NM)	4.0	Speed Time	70 Kt 3 min 26	85 Kt 2 min 49	100 Kt 2 min 24	115 Kt 2 min 05	130 Kt 1 min 51	145 Kt 1 min 39	160 Kt 1 min 30
Slope (%)	5.94	VSP (ft/min)	420	510	600	690	780	870	960

**VISUAL LANDING
CHART
CAT A B C**

AD ELEV 174 ft
HEIGHTS RELATED TO
THR RWY 33 - ELEV 157 ft

TWR 125.550
APP 120.225
129.875
ATIS 126.225

**MOSTAR / MOSTAR (LQMO)
VISUAL LANDING B RWY 33**

