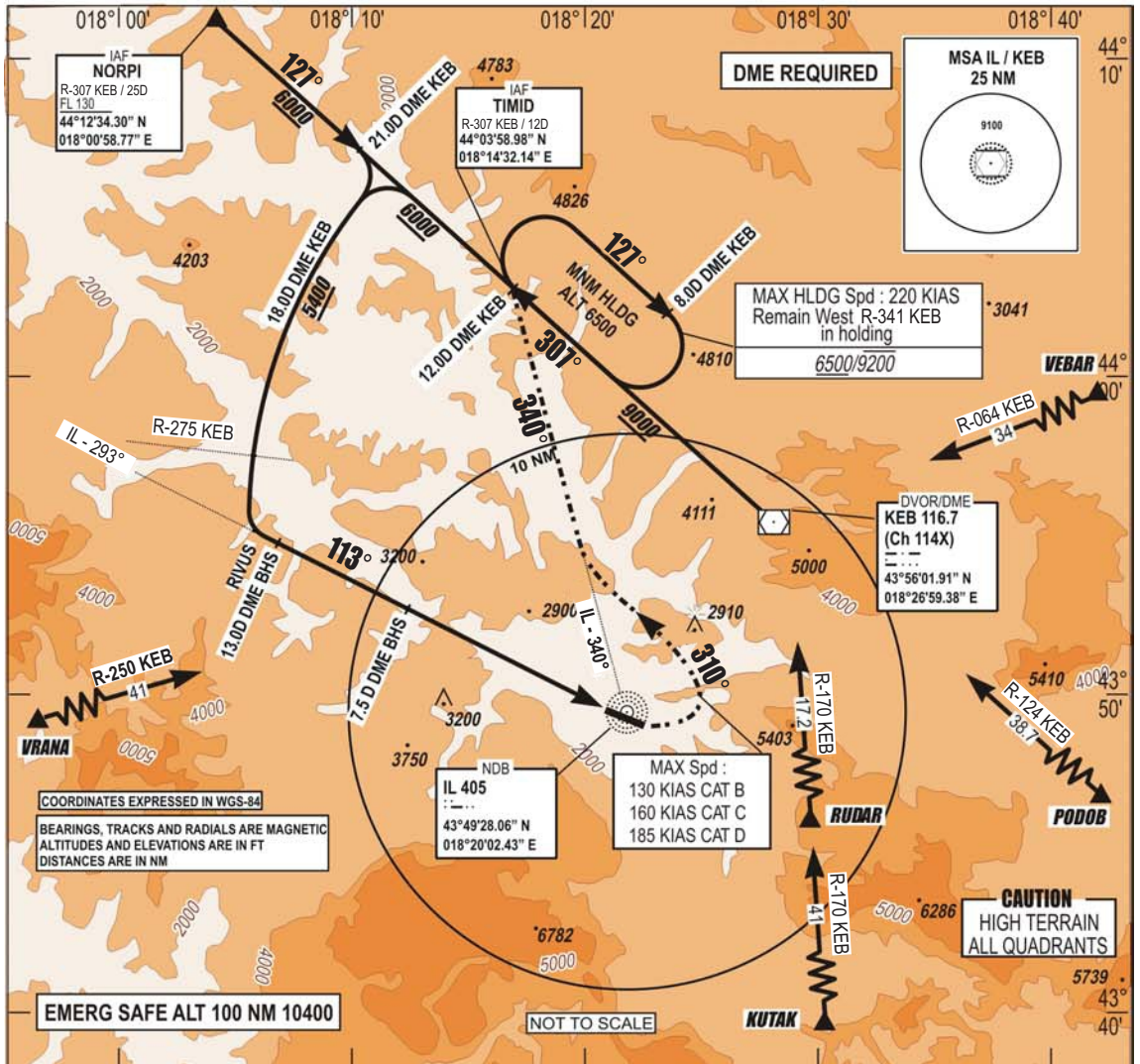


**INSTRUMENT
APPROACH
CHART - ICAO**

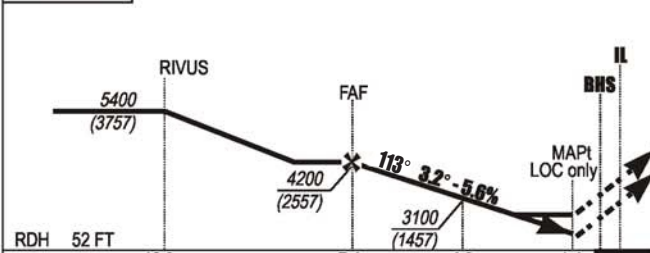
**AERODROME ELEV 1705 FT TRANSITION
HEIGHTS RELATED TO
THR RWY 11 ELEV 1643 FT**
**ALTITUDE
10 000 FT
VAR 5°E (2020)**

**APP 136.450; 119.775
TWR 118.250
GND 121.900
ATIS 124.125**

**SARAJEVO (LQSA)
ILS y RWY 11
MISSED APP 4.0% 5.0%**



**ILS BHS 110.7
DME Ch 44X
GP 330.2**



MISSED APPROACH:
Climb on heading **113°** to **6500**.
Crossing **2750 (1107)** turn **LEFT** on
track **310°** intercept **IL - 340°**:
Direct **TIMID** and hold.
Do **NOT TURN** before **MAPT**.

| | | | | | | |
|------------|-------|-----|-----|-----|--|--|
| RDH | 52 FT | | | | | |
| THR → (NM) | 12.9 | 7.4 | 4.2 | 1.4 | | |
| BHS → (NM) | 13 | 7.5 | 4.3 | 1.5 | | |

| RWY | KNOTS | 60 | 120 | 180 | 240 | 300 | 360 |
|------------|-------|-----|-----|-----|------|------|------|
| 11' | FPM | 240 | 490 | 730 | 970 | 1220 | 1460 |
| 11' | FPM | 300 | 610 | 910 | 1220 | 1520 | 1820 |

| CAT | ILS MAPP | | LOC MAPP | | only 4.0% | | ILS MAPP | | CAT I 5.0% | | LOC MAPP | | only 5.0% | | CIRCLING | |
|-----|----------|-----|----------|-----|-----------|-----|----------|-----|------------|------|----------|-----|-----------|-----|----------|-----|
| | OCA | OCH | OCA | OCH | OCA | OCH | OCA | OCH | OCA | OCH | OCA | OCH | OCA | OCH | OCA | OCH |
| A | 2180 | 540 | 2300 | 660 | 2090 | 450 | 2300 | 660 | 2600 | 950 | | | | | | |
| B | 2230 | 590 | 2300 | 660 | 2150 | 510 | 2300 | 660 | 2910 | 1260 | | | | | | |
| C | 2360 | 710 | 2410 | 770 | 2240 | 600 | 2300 | 660 | 5050 | 3400 | | | | | | |
| D | 2440 | 800 | 2560 | 930 | 2380 | 740 | 2520 | 880 | 5820 | 4170 | | | | | | |

* CLIMB RATE 4.0%
** CLIMB RATE 5.0%
CAUTION: MISSED APPROACH
MINIMUM CLIMB RATE TO 6000'
OCA / H published in feet.
CIRCLING : - North of AD only
- Night not authorized

THIS PAGE INTENTIONALLY LEFT BLANK