

A=D 60GB=A AB8 <9FN9 ; OJ-BA

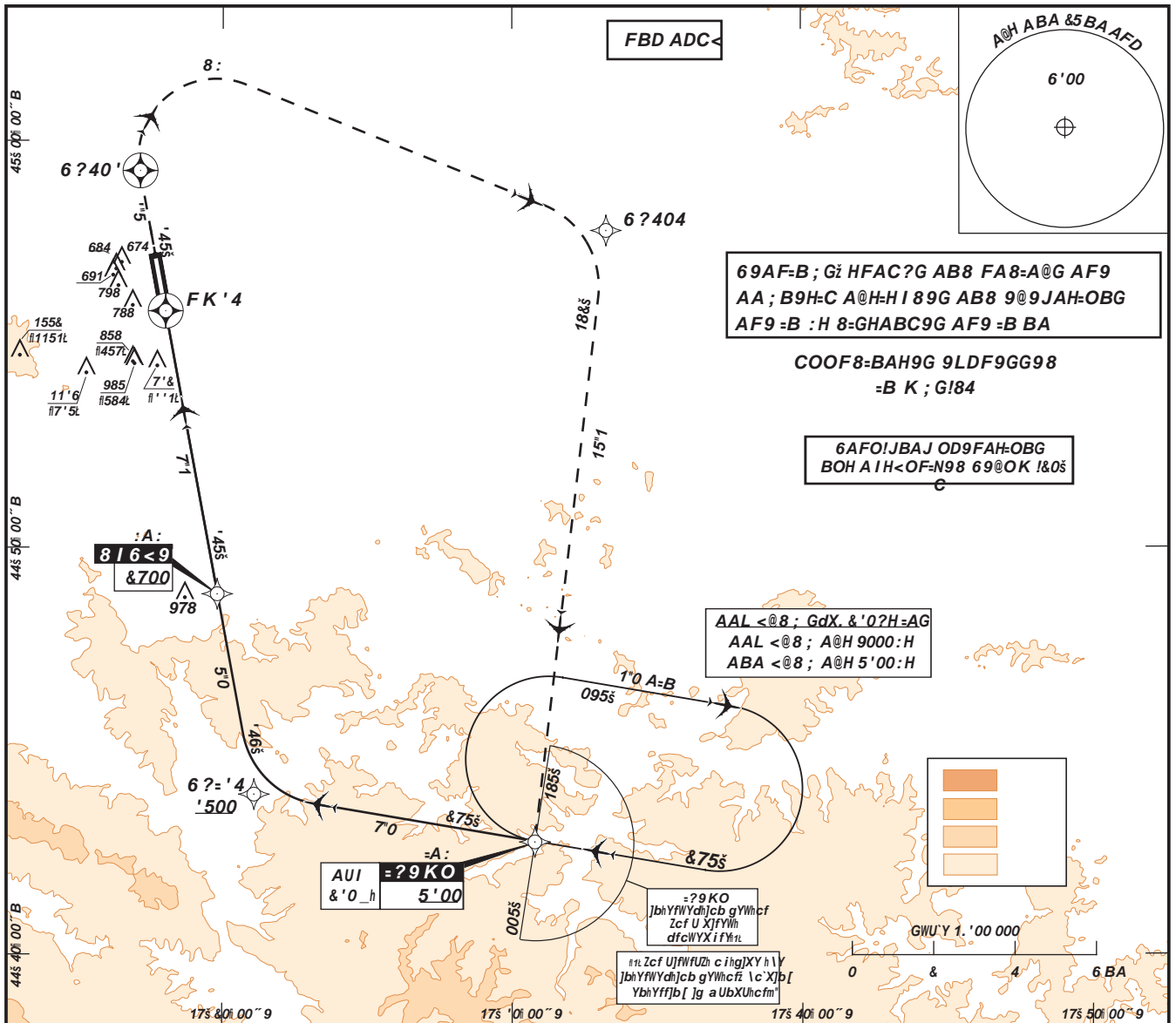
-BGHF I A9BH  
ADDFOAC<  
C<AFH !=CAO

A8 9@9J 401 :H  
<9=: <HG F9@AH98 HO  
H<F FKM'5 9@9J 401:H

HFABG-H:OB  
A@H-H I 89  
10 000:H  
JAF 5š 9 fl&0&0ł

HKF#ADD 1''0075  
GDAF9 1&4"175

6AB>A @ I ?Afl@E6 ?ł  
FBD FKM '4



C<.: AA ; JAF:AA ; 69F=B ; G / FAB-A@G FKM 89G- ; BAHOFG

HA. 10 000 A]ggYX AddfcUW \.

hc 6?404 ž h \Yb  
 hc = ?9 KO ]b W] a V hc 5'0@4899ł UbX ^c]b \c'X]b[ dUhhYfb cf  
 Zc``ck AHC ]bghf iWh]cbg" AAL =AG &'0?bh]" =?9 KO"  
 -Z i bUV'Y hc fYUW \ 5'0@4899ł Uh =?9 KOž Wcbh]b i Y  
 W]a V]b[ ]b h \Y \c'X]b[ dUhhYfb' :c``ck]b[ a]ggYX UddfcUW \ž  
 ]Z 5'0@4899ł fYUW \YX df]cž?9 KO UbX W'YUfYX Vm AHCž  
 dagg]V'Y hc dfcWYXX X]fYWh U bYk UddfcUW \"

ABA A8. JYfh]WU' X]ghUbWYg ]b ZYhž FJF UbX J-G ]b a YhYfg" F9: < ; H. 9@9J H<F

C	@BAJ I JBAJ	@BAJ	C]fW]b[
A	OCA fl<l	OCA fl<l	OCA fl<l
H			
A	870 fl469ł	980 fl579ł	1160 fl759ł
6	880 fl479ł		1440 fl10'9ł
C	890 fl489ł		1950 fl1549ł
8	900 fl499ł		1950 fl1549ł

:A: ! AADh'71 BA	70 ?h 6 a]b 05	85 ?h 5 a]b 01	100 ?h 4 a]b 16	115 ?h ' a]b 4&	1'0 ?h ' a]b 17	145 ?h & a]b 56	160 ?h & a]b 40	185 ?h & a]b 18
JGD flZh# a]bł	'70	450	5'0	610	690	770	850	980