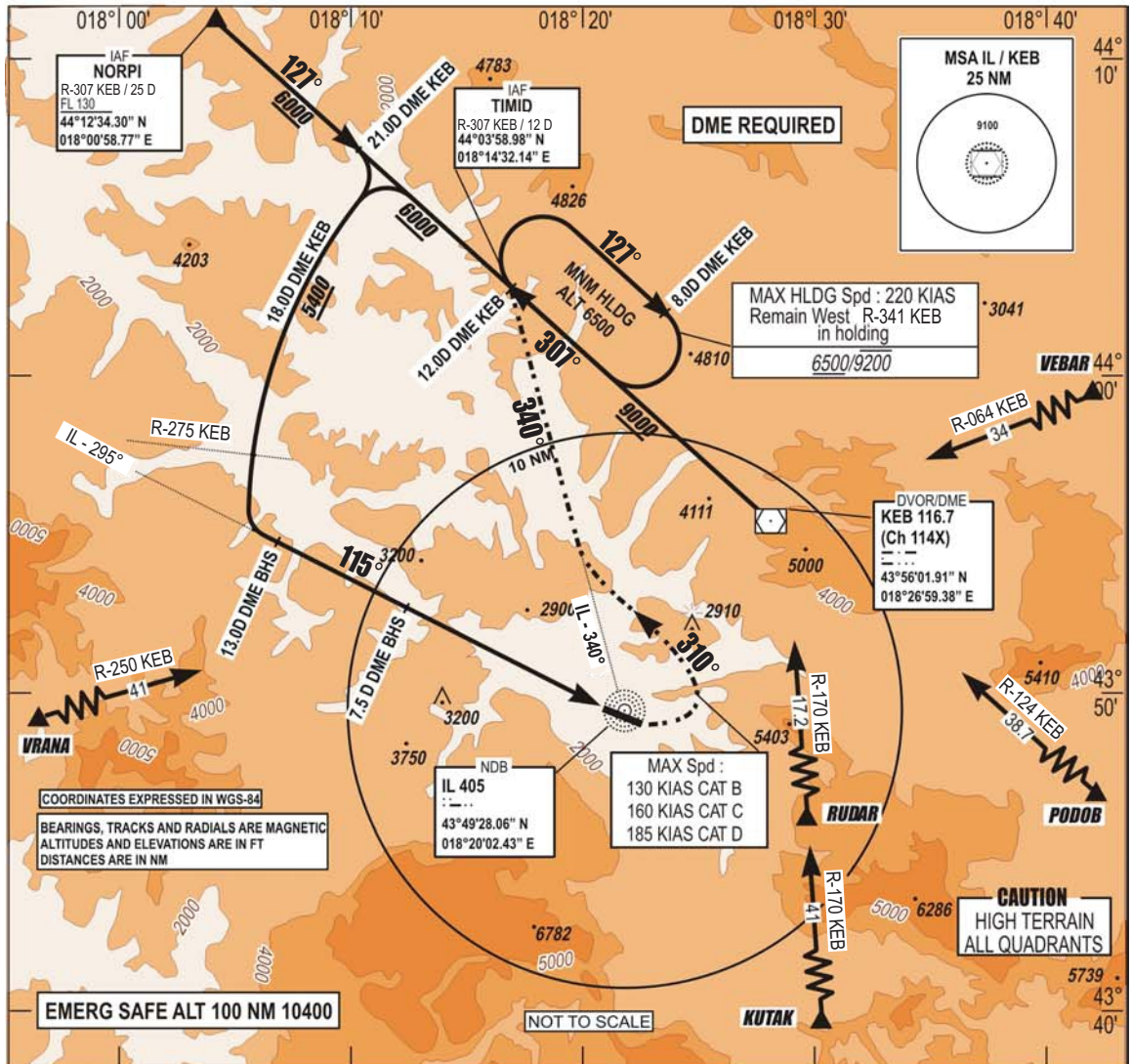


**INSTRUMENT
APPROACH
CHART - ICAO**

AERODROME ELEV 1708 FT **TRANSITION
HEIGHTS RELATED TO
THR RWY 11 ELEV 1643 FT**
**ALTITUDE
10 000 FT**
VAR 5°E (2020)

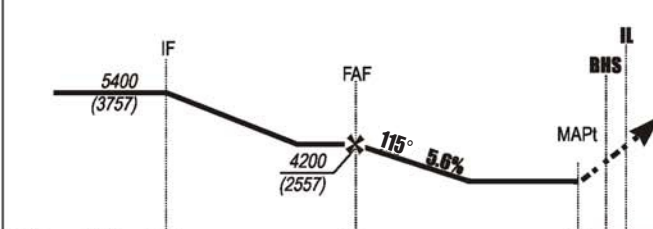
APP 136.450; 119.775
TWR 118.250
GND 121.900
ATIS 124.125

**SARAJEVO (LQSA)
NDBy RWY 11**



ILS BHS 110.7
DME Ch 44X
GP 330.2

CHG: MAG VAR, MAGNETIC BEARINGS, EDITORIAL CHANGES:



THR → (NM)	12.9	7.4	1.4
BHS → (NM)	13	7.5	1.5

MISSED APPROACH:
Turn **LEFT** on track **310°**
climbing to **6500**.
Intercept and follow **IL-340°** to **TIMID**.
Do **NOT TURN** before **MAPt**.

RWY	KNOTS	60	120	180	240	300	360
11	FPM	180	360	540	720	900	1080

CAT	NDB MAPP		CIRCLING	
	OCA	OCH	OCA	OCH
A			3830	2180
B			3830	2180
C	3830	2180	5050	3400
D			5820	4170

OCA / H published in feet.
CIRCLING : - North of AD only
- Night not authorized

* CLIMB RATE 3.0%
CAUTION: MISSED APPROACH
MINIMUM CLIMB RATE TO 6000'

THIS PAGE INTENTIONALLY LEFT BLANK