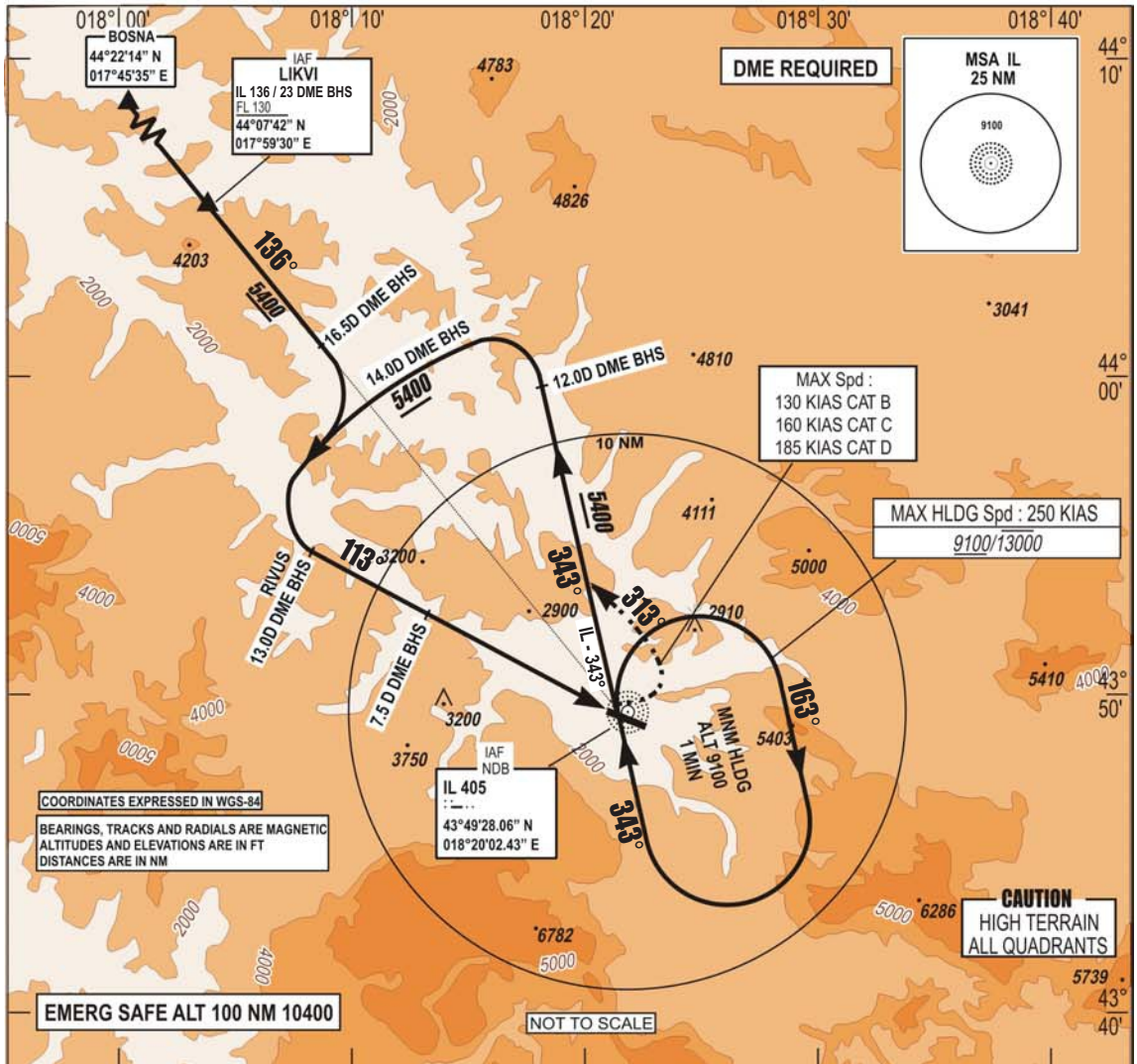


**INSTRUMENT  
APPROACH  
CHART - ICAO**

**AERODROME ELEV 1708 FT TRANSITION  
HEIGHTS RELATED TO ALTITUDE  
THR RWY 11 ELEV 1643 FT 10 000 FT  
VAR 5°E (2020)**

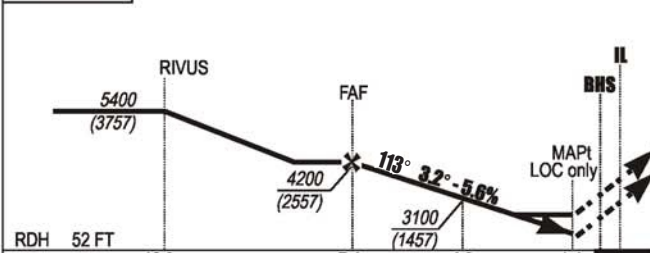
**APP 136.450; 119.775  
TWR 118.250  
GND 121.900  
ATIS 124.125**

**SARAJEVO (LQSA)  
ILSz RWY 11  
MISSED APP 4.0% 5.0%**



ILS BHS 110.7  
DME Ch 44X  
GP 330.2

CHG: MAG VAR, MAGNETIC BEARINGS, EDITORIAL CHANGES;



**MISSED APPROACH:**  
Climb on heading **113°** to **6000**.  
Crossing **2750** (1107) turn **LEFT** on  
track **313°** intercept **IL - 343°** and follow  
ATC clearance.  
Do **NOT TURN** before **MAPt**.

RDH	52 FT					
THR → (NM)	12.9	7.4	4.2	1.4		
BHS → (NM)	13	7.5	4.3	1.5		

RWY	KNOTS	60	120	180	240	300	360
<b>11'</b>	FPM	240	490	730	970	1220	1460
<b>11'</b>	FPM	300	610	910	1220	1520	1820

CAT	ILS MAPP		LOC MAPP		only 4.0%		ILS MAPP		LOC MAPP		only 5.0%		CIRCLING	
	OCA	OCH	OCA	OCH	OCA	OCH	OCA	OCH	OCA	OCH	OCA	OCH	OCA	OCH
A	2180	540	2300	660	2090	450	2300	660	2600	950				
B	2230	590	2300	660	2150	510	2300	660	2910	1260				
C	2360	710	2410	770	2240	600	2300	660	5050	3400				
D	2440	800	2560	930	2380	740	2520	880	5820	4170				

\* CLIMB RATE 4.0%  
\*\* CLIMB RATE 5.0%  
CAUTION: MISSED APPROACH  
MINIMUM CLIMB RATE TO 6000'  
OCA / H published in feet.  
CIRCLING : - North of AD only  
- Night not authorized

THIS PAGE INTENTIONALY LEFT BLANK