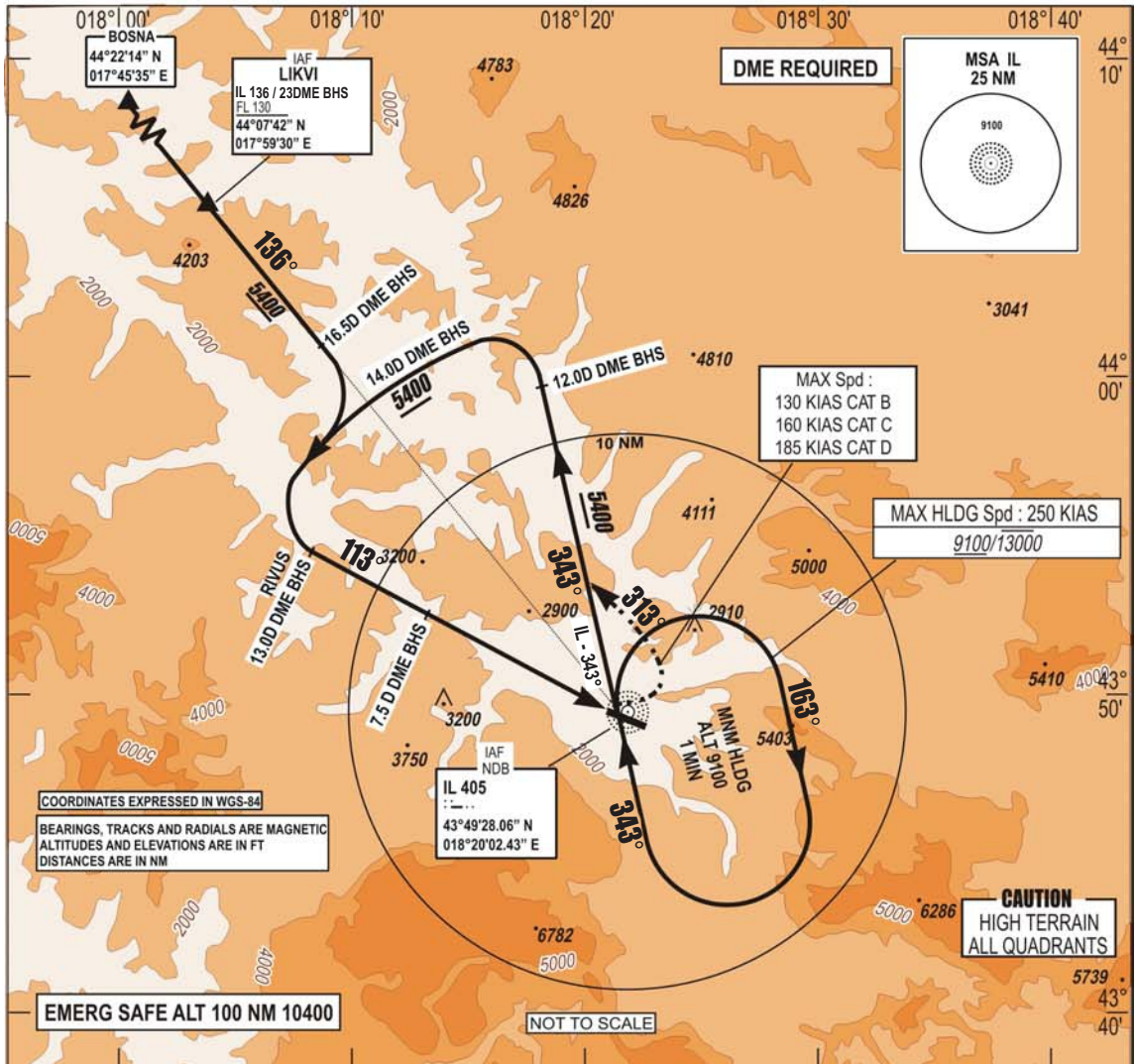


**INSTRUMENT
APPROACH
CHART - ICAO**

AERODROME ELEV 1708 FT **TRANSITION**
HEIGHTS RELATED TO **ALTITUDE**
THR RWY 11 ELEV 1643 FT **10 000 FT**
VAR 5°E (2020)

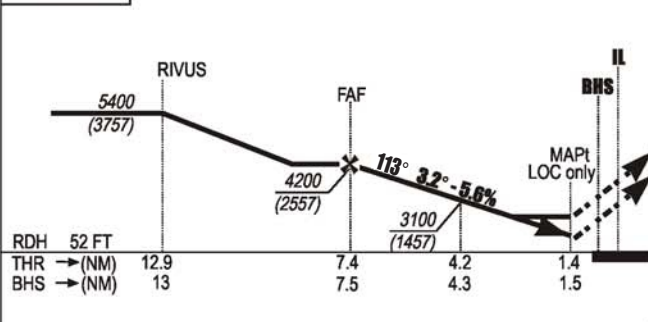
APP 136.450; 119.775
TWR 118.250
GND 121.900
ATIS 124.125

SARAJEVO (LQSA)
ILSz RWY 11
MISSED APP 2.5% 3.0%



ILS BHS 110.7
DME Ch 44X
GP 330.2

CHG: MAG VAR, MAGNETIC BEARINGS, EDITORIAL CHANGES;



MISSED APPROACH:
Climb on heading **113°** to **6000**.
Crossing **2750** (1107) turn **LEFT** on
track **313°** intercept **IL - 343°** and follow
ATC clearance.
Do **NOT TURN** before **MAPt**.

RDH	52 FT					
THR → (NM)	12.9	7.4	4.2	1.4		
BHS → (NM)	13	7.5	4.3	1.5		

RWY	KNOTS	60	120	180	240	300	360
11°	FPM	180	360	540	720	900	1080

CAT	ILS MAPP	CAT I 2.5%	LOC MAPP	only 2.5%	ILS MAPP	CAT I 3.0%	LOC MAPP	only 3.0%	CIRCLING	
	OCA	OCH	OCA	OCH	OCA	OCH	OCA	OCH	OCA	OCH
A	2540	890	2590	940	2300	660	2300	660	2640	990
B	2550	900	2610	960	2340	700	2340	700	2910	1260
C	2560	919	2630	980	2440	800	2500	850	5050	3400
D	2680	1040	-	-	2650	1010	-	-	5820	4170

* CLIMB RATE 3.0%
CAUTION: MISSED APPROACH
MINIMUM CLIMB RATE TO 6000'

OCA / H published in feet.
CIRCLING : - North of AD only
- Night not authorized

THIS PAGE INTENTIONALLY LEFT BLANK