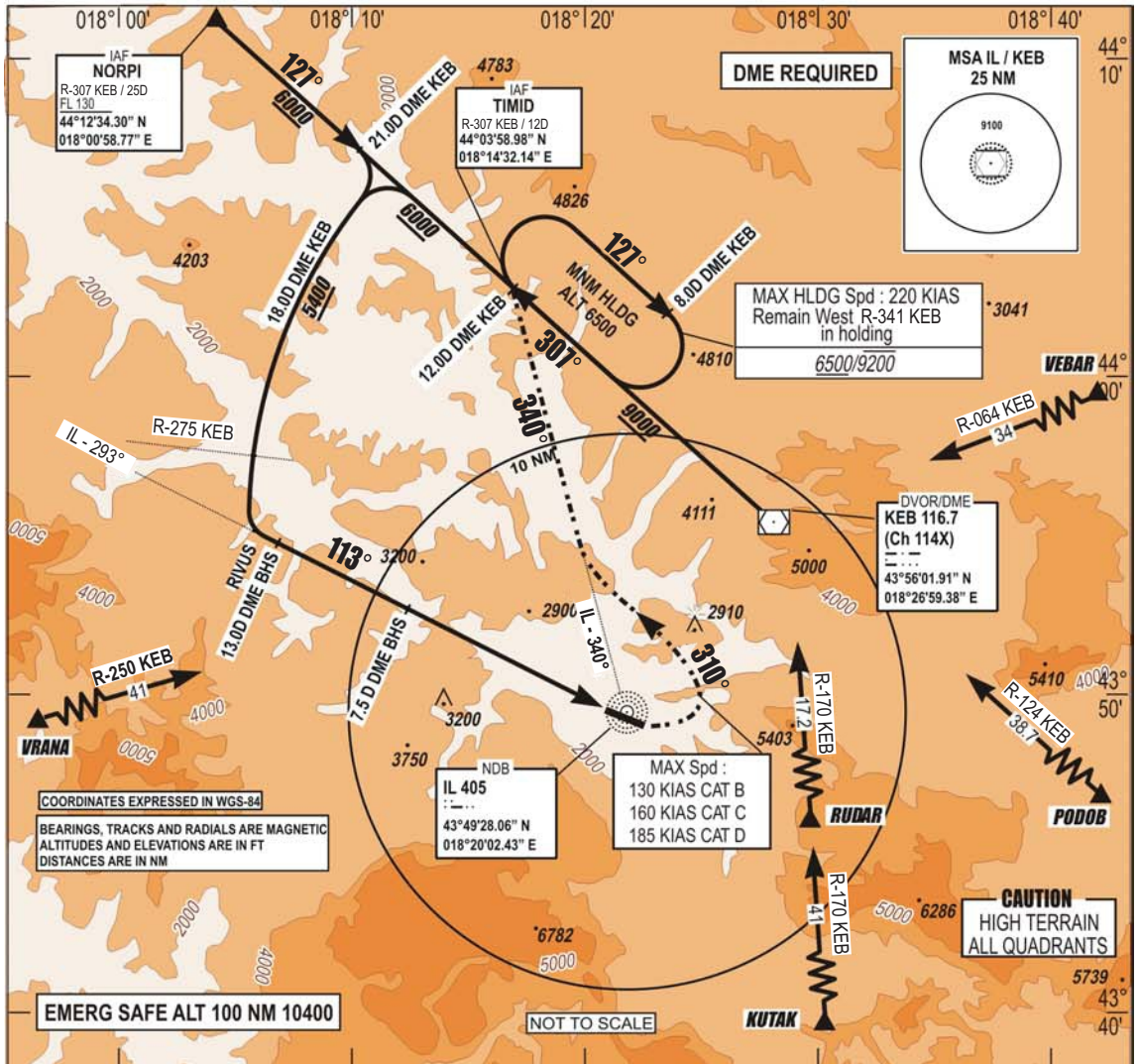


**INSTRUMENT  
APPROACH  
CHART - ICAO**

**AERODROME ELEV 1708 FT** **TRANSITION**  
**HEIGHTS RELATED TO** **ALTITUDE**  
**THR RWY 11 ELEV 1643 FT** **10 000 FT**  
**VAR 5°E (2020)**

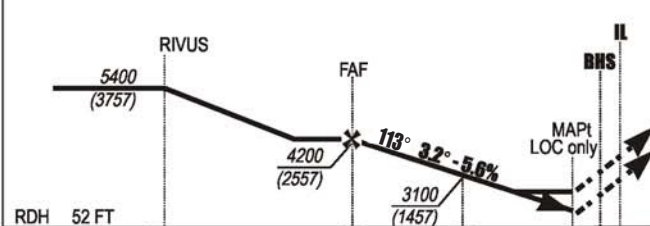
APP 136.450; 119.775  
TWR 118.250  
GND 121.900  
ATIS 124.125

**SARAJEVO (LQSA)**  
**ILS y RWY 11**  
MISSED APP 4.0% 5.0%



ILS BHS 110.7  
DME Ch 44X  
GP 330.2

CHG: MAG VAR, MAGNETIC BEARINGS, EDITORIAL CHANGES;



**MISSED APPROACH:**  
Climb on heading **113°** to **6500**.  
Crossing **2750 (1107)** turn **LEFT** on track **310°** intercept **IL - 340°**.  
Direct **TIMID** and hold.  
Do **NOT TURN** before **MAPt**.

RDH	52 FT				
THR → (NM)	12.9	7.4	4.2	1.4	
BHS → (NM)	13	7.5	4.3	1.5	

RWY	KNOTS	60	120	180	240	300	360
11*	FPM	240	490	730	970	1220	1460
11*	FPM	300	610	910	1220	1520	1820

CAT	ILS MAPP 4.0%		LOC MAPP only 4.0%		ILS MAPP 5.0%		LOC MAPP only 5.0%		CIRCLING	
	OCA	OCH	OCA	OCH	OCA	OCH	OCA	OCH	OCA	OCH
A	2180	540	2300	660	2090	450	2300	660	2600	950
B	2230	590	2300	660	2150	510	2300	660	2910	1260
C	2360	710	2410	770	2240	600	2300	660	5050	3400
D	2440	800	2560	930	2380	740	2520	880	5820	4170

\* CLIMB RATE 4.0%  
\*\* CLIMB RATE 5.0%  
CAUTION: MISSED APPROACH  
MINIMUM CLIMB RATE TO 6000'  
OCA / H published in feet.  
CIRCLING : - North of AD only  
- Night not authorized

THIS PAGE INTENTIONALLY LEFT BLANK