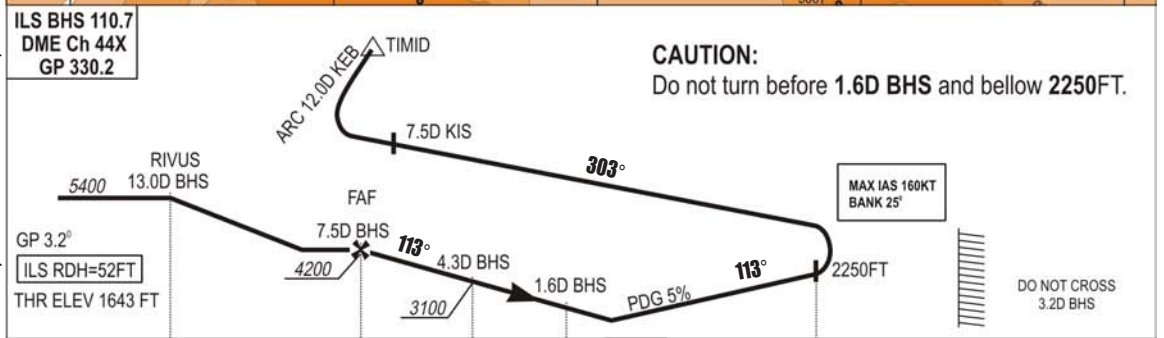
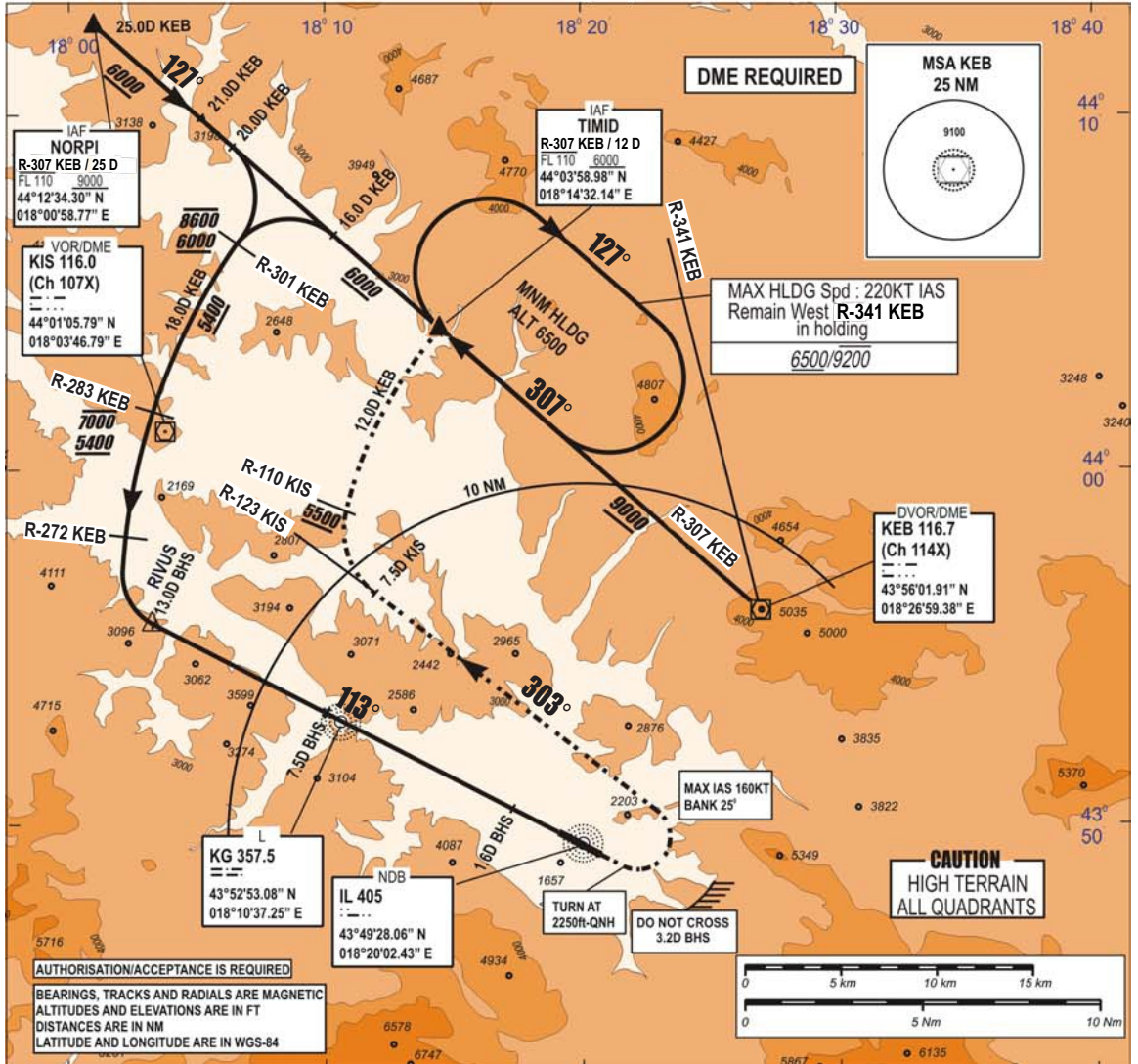


**INSTRUMENT
APPROACH
CHART - ICAO**

AERODROME ELEV 1708 FT
HEIGHTS RELATED TO
THR RWY 11 ELEV 1643 FT
TRANSITION
ALTITUDE
10 000 FT
VAR 5°E (2020)

APP 136.450; 119.775
TWR 118.250
GND 121.900
ATIS 124.125

**SARAJEVO (LQSA)
SPECIAL ILSx
RWY 11**



CHG: MAG VAR, MAGNETIC BEARINGS, EDITORIAL CHANGES:

CAT	OCA (FT)	OCH (FT)
A	1846	202
B	1856	212
C	1866	222
D	1875	232

MISSED APPROACH:
Climb straight ahead. At 2250FT turn **LEFT**, follow **R-123 KIS** climbing to 6500FT. At 7.5D KIS turn **RIGHT**, follow arc 12.0D KEB to TIMID and hold.
Missed app requires climb gradient 5% up to 5500FT.
MAX IAS 160KT, bank angle 25° is required.
FOR SPECIAL PERFORMANCE AIRCRAFT ONLY.
REQUIRES AUTHORISATION - ACCEPTANCE BY BH DCA.

THIS PAGE INTENTIONALLY LEFT BLANK