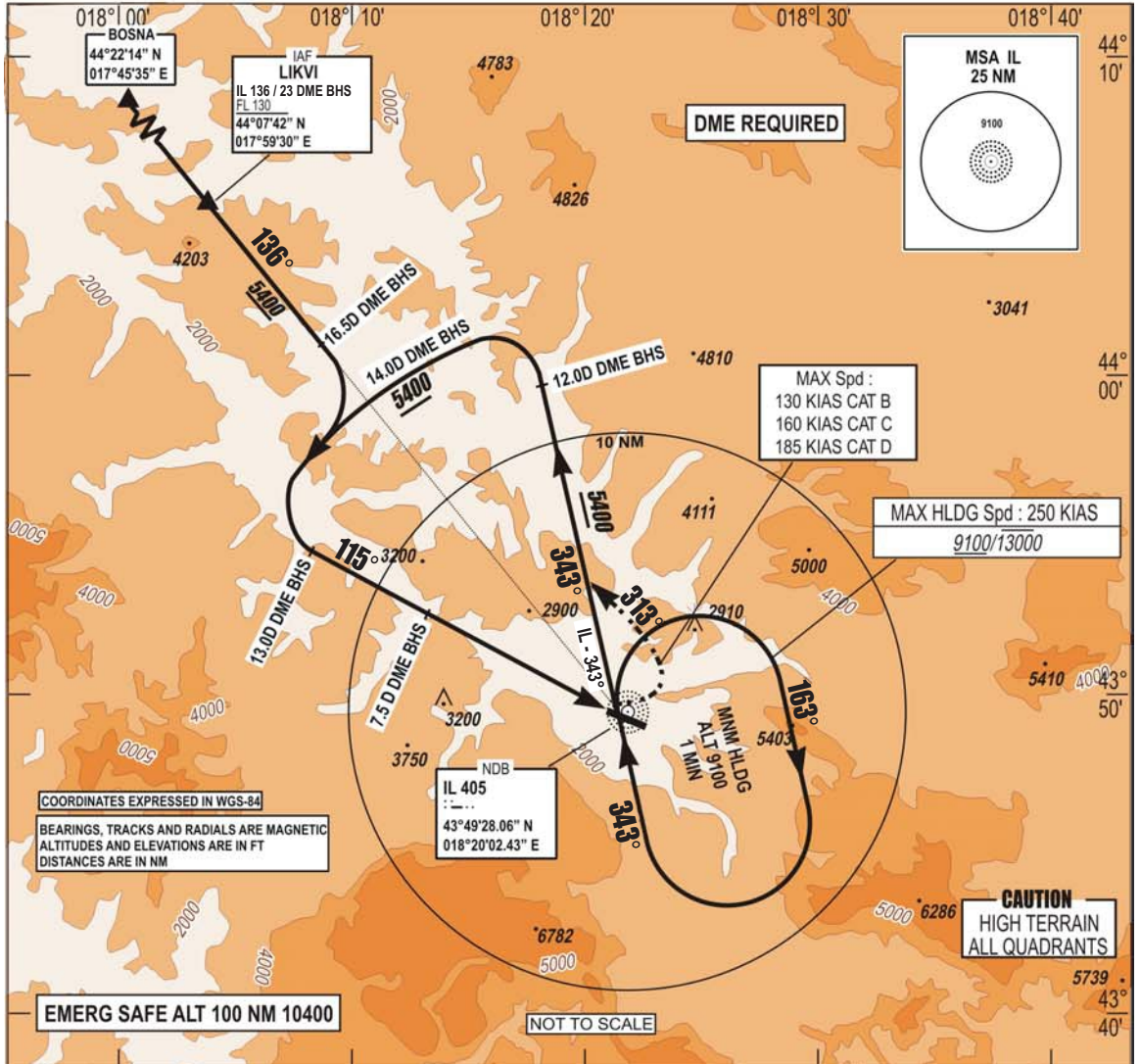


**INSTRUMENT  
APPROACH  
CHART - ICAO**

**AERODROME ELEV 1708 FT TRANSITION  
HEIGHTS RELATED TO ALTITUDE  
THR RWY 11 ELEV 1643 FT 10 000 FT  
VAR 5°E (2020)**

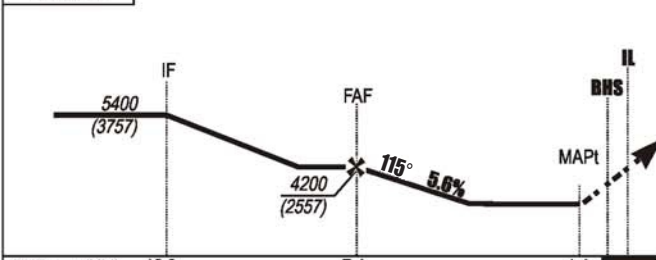
**APP 136.450; 119.775  
TWR 118.250  
GND 121.900  
ATIS 124.125**

**SARAJEVO (LQSA)  
NDBz RWY 11**



**ILS BHS 110.7  
DME Ch 44X  
GP 330.2**

CHG: MAG VAR, MAGNETIC BEARINGS, EDITORIAL CHANGES:



**MISSED APPROACH:**  
Turn **LEFT** on track **313°**  
climbing to **6000**.  
Intercept **IL-343°** and follow ATC clearance.  
Do **NOT TURN** before **MAPT**.

THR → (NM)	12.9	7.4	1.4
BHS → (NM)	13	7.5	1.5

CAT	NDB MAPP		CIRCLING	
	OCA	OCH	OCA	OCH
A			3830	2180
B	3830	2180	3830	2180
C			5050	3400
D			5820	4170

OCA / H published in feet.  
CIRCLING : - North of AD only  
- Night not authorized

THIS PAGE INTENTIONALY LEFT BLANK