

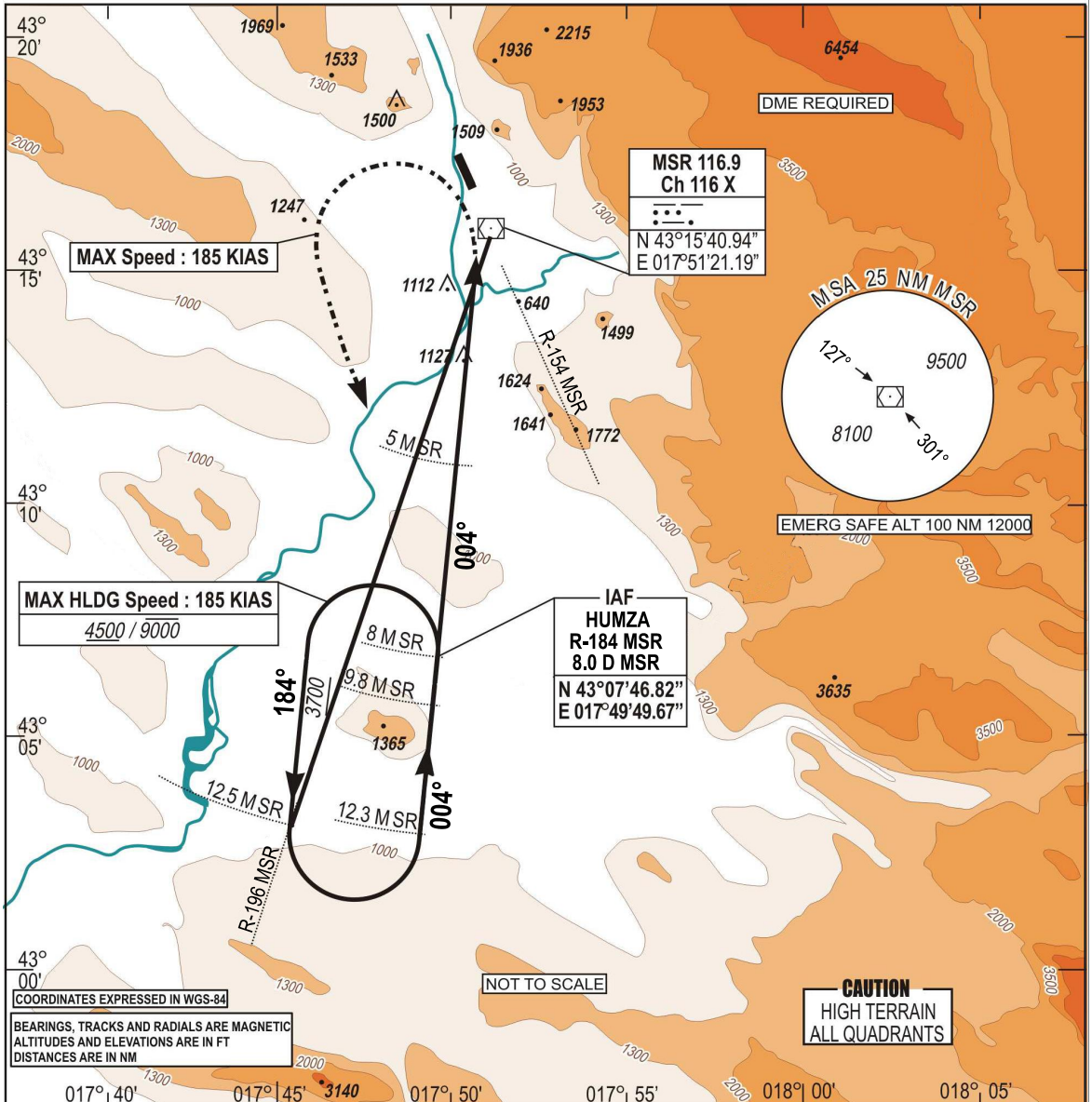
**INSTRUMENT  
APPROACH  
CHART - ICAO**

AERODROM ELEV 174 FT  
HEIGHTS RELATED TO  
THR RWY 33 ELEV 157 FT

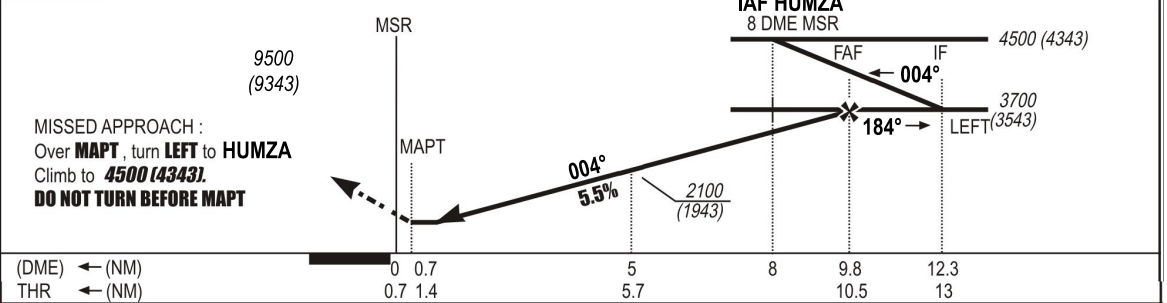
TRANSITION  
ALTITUDE  
10 000 FT  
VAR 5°E (2020)

APP 120.225  
129.875  
TWR 125.550  
ATIS 126.225

**MOSTAR (LQMO)  
VORa RWY 33**



TA: 10 000



MDA (H) published in feet. REF Elev: ALT THR

CATEGORY	A	B	C
	OCA (H)	OCA (H)	OCA (H)
S-VOR + CIRCLING(*) 33	1780 (1623)	1800 (1643)	1980 (1823)

\*CIRCLING NOT AUTHORIZED EAST OF RWY 15/33

DME (NM)	9	8	7	6	5
ALT (FT)	3440	3100	2770	2430	2100
HEIGHT (FT)	(3283)	(2943)	(2613)	(2273)	(1943)

CHG: MAG VAR, IAF MOXAD RENAMED TO HUMZA

**THIS PAGE INTENTIONALLY LEFT BLANK**