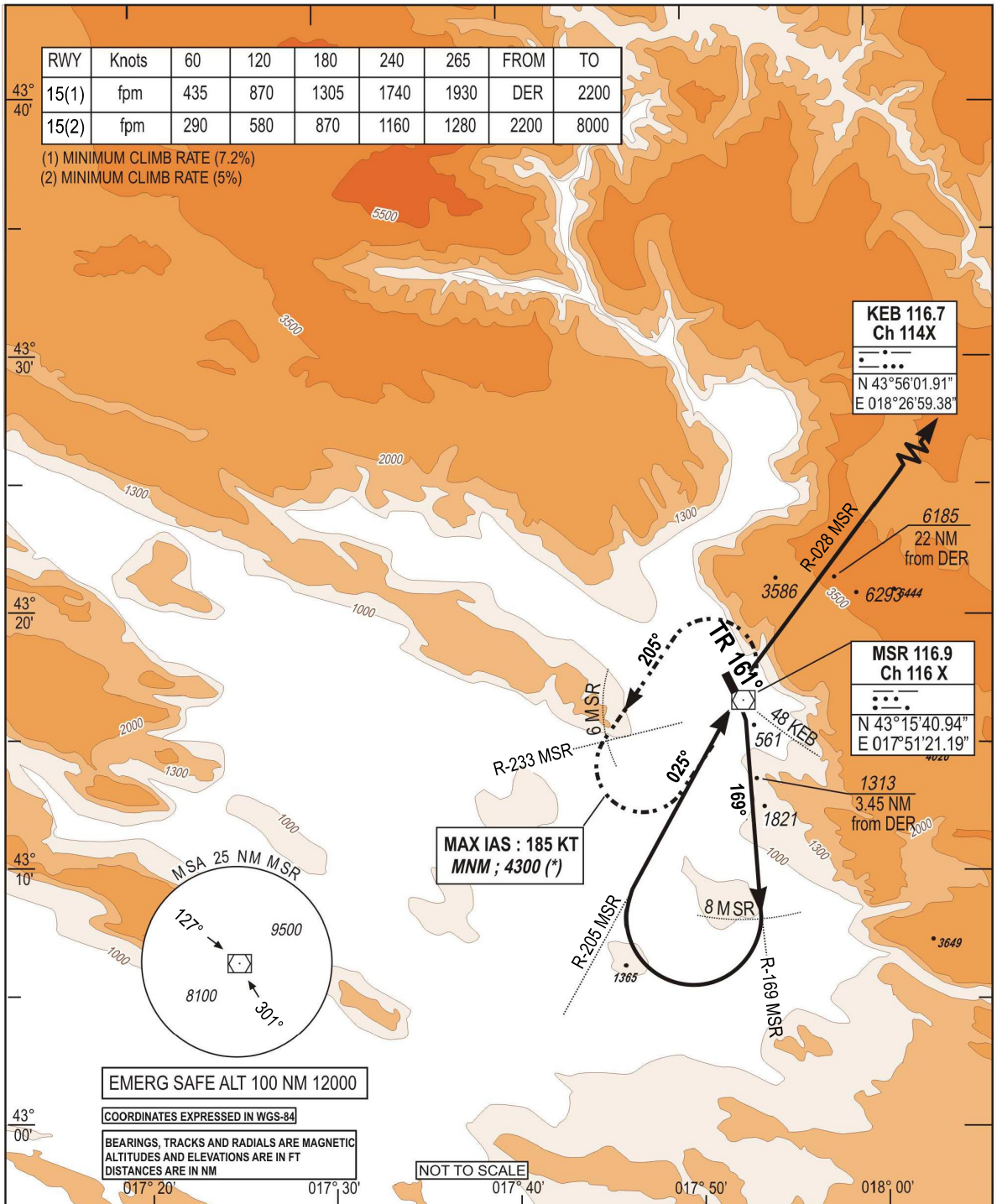


**STANDARD DEPARTURE CHART
INSTRUMENT (SID) - ICAO**

TRANSITION
ALTITUDE
10 000 FT
VAR 5°E (2020)

APP 120.225
129.875
TWR 125.550
ATIS 126.225

**MOSTAR (LQMO)
KEB 1B RWY15**



RWY	Knots	60	120	180	240	265	FROM	TO
15(1)	fpm	435	870	1305	1740	1930	DER	2200
15(2)	fpm	290	580	870	1160	1280	2200	8000

(1) MINIMUM CLIMB RATE (7.2%)
(2) MINIMUM CLIMB RATE (5%)

CHG: MAG VAR:

SID	DEPARTURE ROUTE DESCRIPTION
KEB 1B (RWY 15)	<ul style="list-style-type: none"> - After DER. Climb (1) TR 161° then R-169 MSR - At 8.0 D MSR , turn right to intercept R-205 MSR inbound direct to MSR. - Turn right to intercept R-028 MSR direct to KEB. - Then as directed by ATC. <p>(1) Minimum climb rate : 7.2% from DER to 2200 ft then 5.0% until 8000 ft (*) (*) Rescue pattern climb : Over 2200 ft, if minimums climb rate not possible above 2200 ft, climb standard rate (3.3%) until MSR, then climb in holding pattern. At 8000 ft direct to KEB.</p>

THIS PAGE INTENTIONALLY LEFT BLANK