

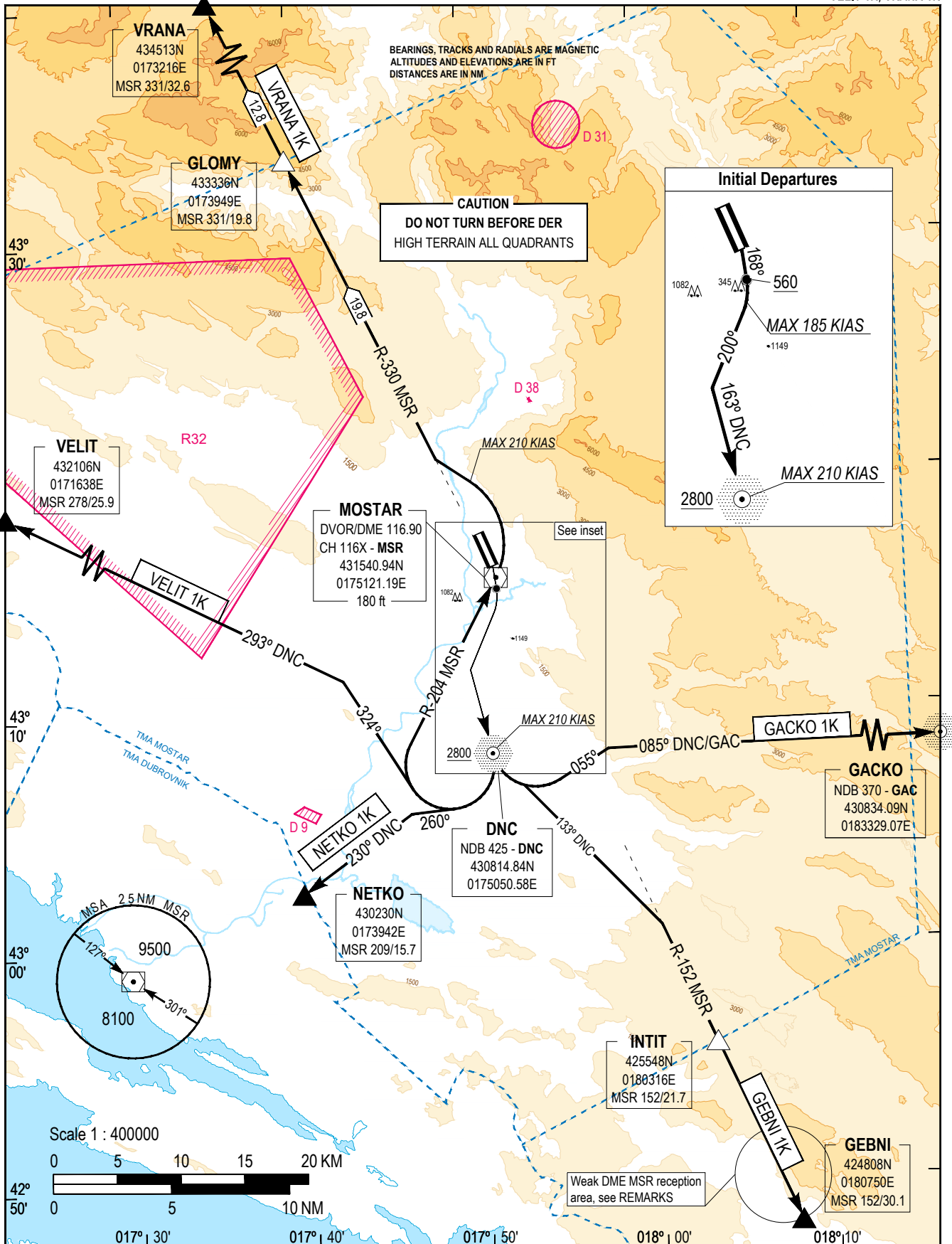
STANDARD DEPARTURE CHART
INSTRUMENT (SID) - ICAO
CAT A B C

AERODROME ELEV 174 FT
TRANSITION
ALTITUDE
10000 FT
VAR 5° E (2020)

APP 120.225
129.875
TWR 125.550
ATIS 126.225

MOSTAR (LQMO)
RWY15

GACKO 1K, GEBNI 1K, NETKO 1K,
VELIT 1K, VRANA 1K



STANDARD INSTRUMENT DEPARTURES (SID)

**RWY15 GACKO 1K, GEBNI 1K, NETKO 1K,
VELIT 1K, VRANA 1K**

SID DESIGNATOR	ROUTE DESCRIPTION	REMARKS
GACKO 1K	<p><i>Climb MAG 168°. At 560 ft turn right (MAX 185 KIAS) MAG 200° to intercept and follow 163° DNC.</i></p> <p><i>Cross NDB DNC at or above 2800 ft, then turn left (MAX 210 KIAS) MAG 055° to intercept and follow 085° DNC/GAC(*) to GACKO.</i></p> <p><i>(*) At 15 MSR follow 085° GAC.</i></p>	<p><i>Minimum climb gradient of 6.6% until 2800 ft.</i></p> <p><i>Then 3.8% minimum until 5000 ft.</i></p> <p><i>Do not turn before DER.</i></p>
GEBNI 1K	<p><i>Climb MAG 168°. At 560 ft turn right (MAX 185 KIAS) MAG 200° to intercept and follow 163° DNC.</i></p> <p><i>Cross NDB DNC at or above 2800 ft, then turn left (MAX 210 KIAS) to intercept and follow 133° DNC to intercept and follow R-152 MSR to INTIT, then GEBNI.</i></p>	<p><i>Minimum climb gradient of 6.6% until 2800 ft.</i></p> <p><i>Do not turn before DER.</i></p> <p><i>CAUTION: Weak DME MSR reception may temporarily occur from 26 MSR to GEBNI due to Terrain. Minimum climb gradient of 6.6% recommended up to 13000 ft (or GEBNI).</i></p>
NETKO 1K	<p><i>Climb MAG 168°. At 560 ft turn right (MAX 185 KIAS) MAG 200° to intercept and follow 163° DNC.</i></p> <p><i>Cross NDB DNC at or above 2800 ft, then turn right (MAX 210 KIAS) MAG 260° to intercept and follow 230° DNC to NETKO.</i></p>	<p><i>Minimum climb gradient of 6.6% until 2800 ft.</i></p> <p><i>Do not turn before DER.</i></p>
VELIT 1K	<p><i>Climb MAG 168°. At 560 ft turn right (MAX 185 KIAS) MAG 200° to intercept and follow 163° DNC.</i></p> <p><i>Cross NDB DNC at or above 2800 ft, then turn right (MAX 210 KIAS) MAG 324° to intercept and follow 293° DNC to VELIT.</i></p>	<p><i>Minimum climb gradient of 6.6% until 2800 ft.</i></p> <p><i>Do not turn before DER.</i></p>
VRANA 1K	<p><i>Climb MAG 168°. At 560 ft turn right (MAX 185 KIAS) MAG 200° to intercept and follow 163° DNC.</i></p> <p><i>Cross NDB DNC at or above 2800 ft, then turn right (MAX 210 KIAS) to intercept and follow R-204 MSR direct to cross DVOR/DME MSR. At DVOR/DME MSR turn left (MAX 210 KIAS) to intercept and follow R-330 MSR to GLOMY, then VRANA.</i></p>	<p><i>Minimum climb gradient of 6.6% until 2800 ft.</i></p> <p><i>Then 5.7% until 7500 ft.</i></p> <p><i>Do not turn before DER.</i></p>