

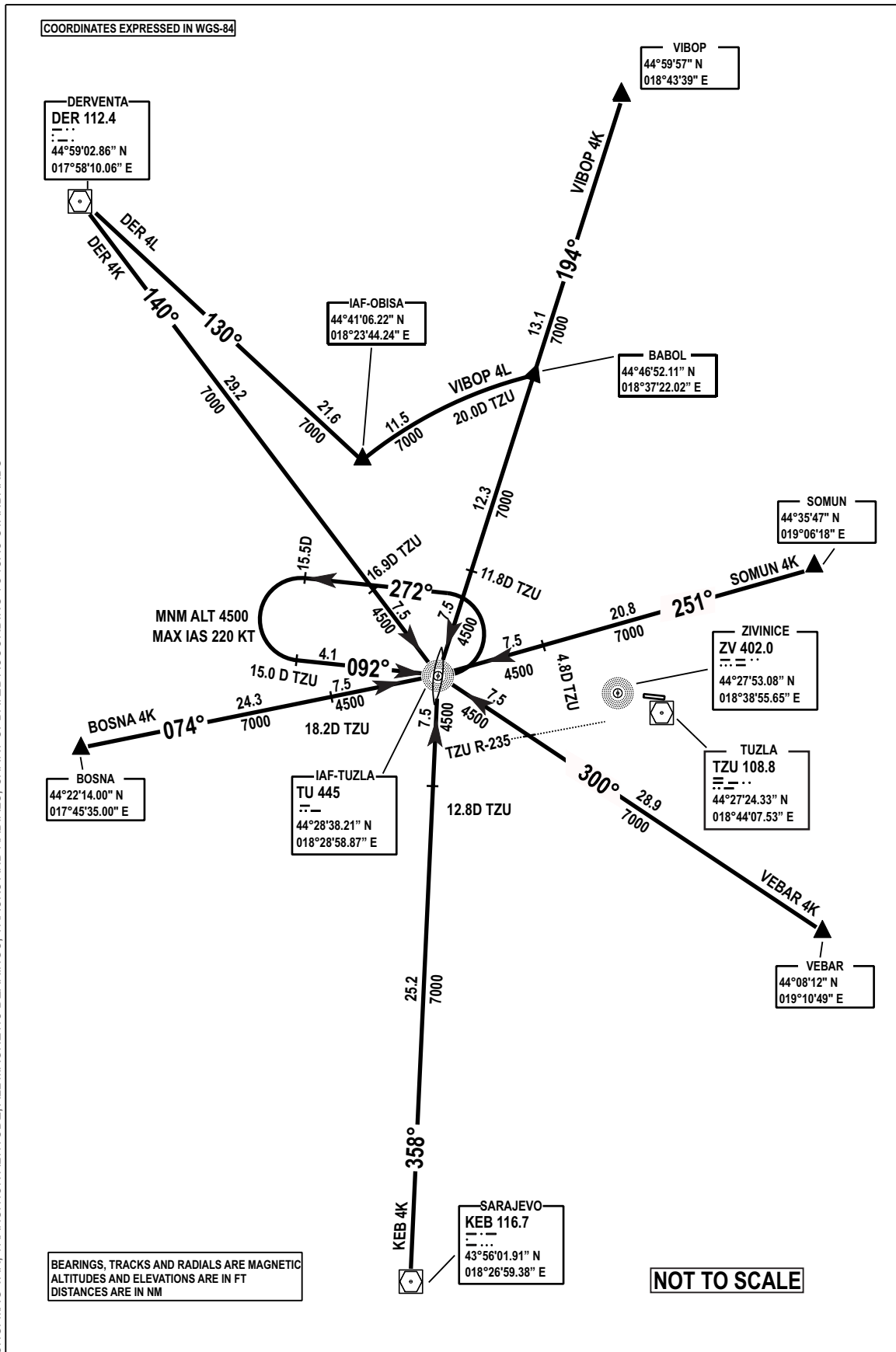
**STANDARD ARRIVAL CHART
INSTRUMENT (STAR) - ICAO**

TRANSITION
ALTITUDE
10 000 FT
VAR 4° E (2017)

APP 120.350
Radar
TWR 132.925
ATIS

TUZLA (LQ TZ)

CHG: MAG VAR; TRANSITION ALTITUDE; ALL MAGNETIC BEARINGS, TRACKS AND RADIALS; CHART UPDATED ACCORDING TO ICAO STANDARDS



STAR