

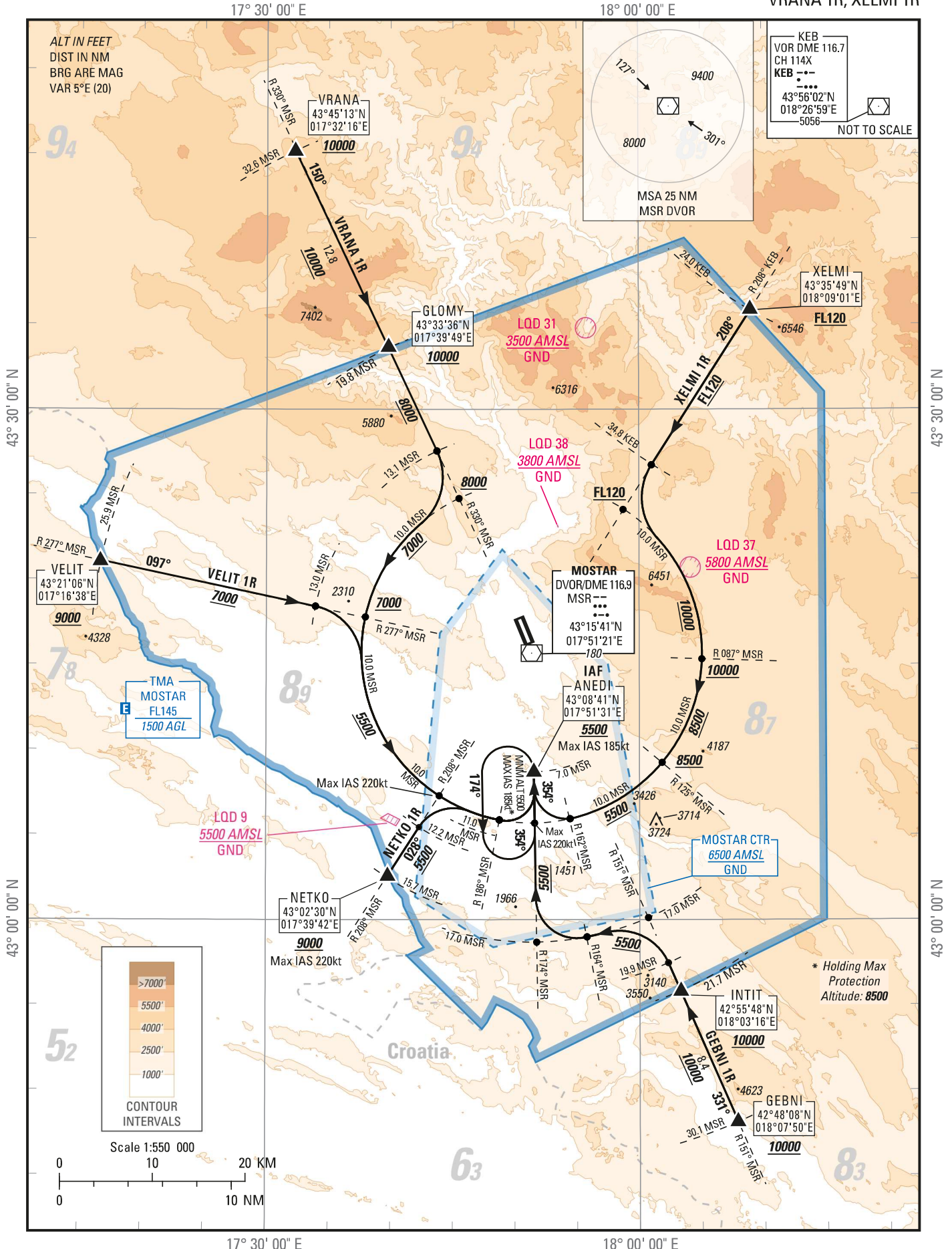
STANDARD ARRIVAL CHART —  
INSTRUMENT (STAR) — ICAO

TRANSITIONAL ALTITUDE  
10 000 ft

TWR 125.550  
APP 120.225  
129.875  
ATIS 126.225

MOSTAR / MOSTAR (LQMO)  
CONV STAR RWY 33

GEBNI 1R, NETKO 1R, VELIT 1R  
VRANA 1R, XELMI 1R



THIS PAGE INTENTIONALLY LEFT BLANK