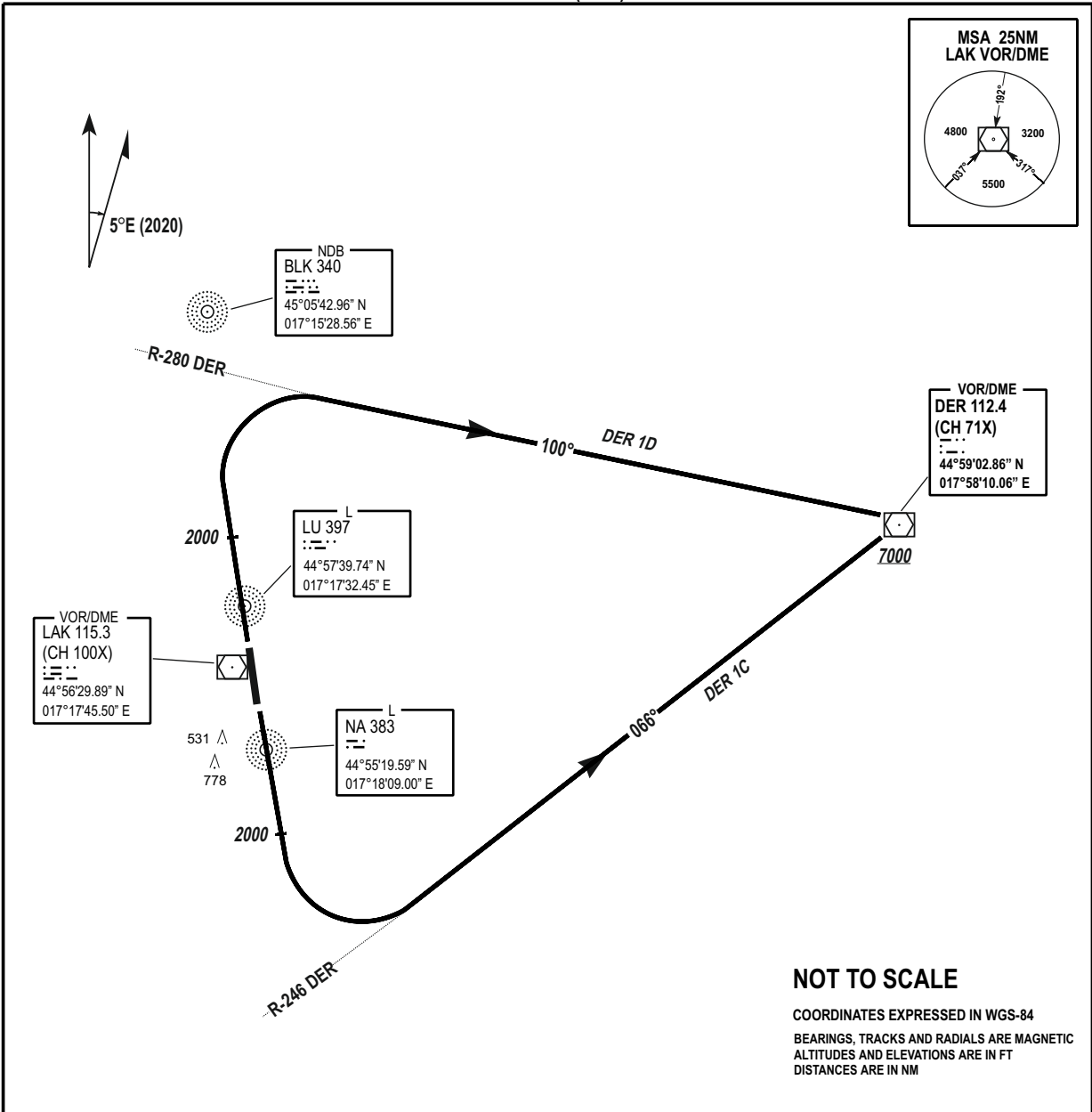


**STANDARD DEPARTURE** AD ELEV 401 FT  
**CHART INSTRUMENT**  
**(SID) - ICAO**

TRANSITION ALTITUDE 10 000 FT  
VAR 5°E (2020)  
TWR/APP 133.075  
SPARE 124.175  
ATIS 122.625

**BANJA LUKA (LQBK)**  
**DER 1C / DER 1D**



**MINIUM REQUIRED CLIMB RATE (FPM)**

RWY	%	80	120	150	180	210	250	To
16	8.5%	690	1040	1300	1550	1810	2160	2500
34	5.6%	460	680	860	1030	1200	1420	2500

CHG: LAK VOR/DME COORDINATES;

SID	ROUTEING (Including MNM Noise Routes)
DER 1C (MAG BRG 165°)	Climb on RWY TR to 2000FT, then turn left to TR 066° to intercept and follow R-246 DER to cross VOR/DME DER at ora above 7000 FT.
DER 1D (MAG BRG 345°)	Climb on RWY TR to 2000FT, then turn right to TR 100° to intercept and follow R-280 DER. to cross VOR/DME DER at or above 7000 FT.

THIS PAGE INTENTIONALLY LEFT BLANK