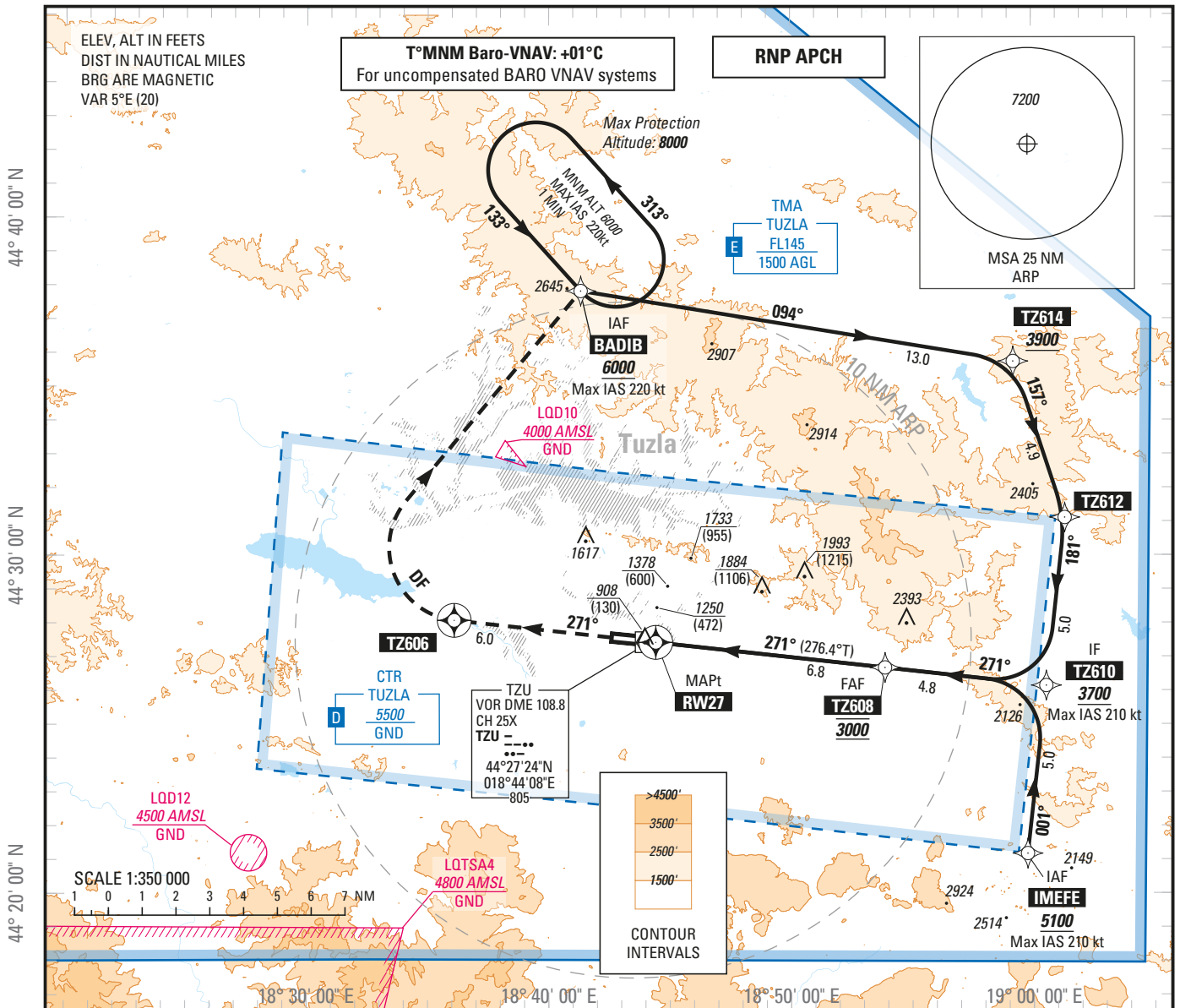


**INSTRUMENT
APPROACH
CHART — ICAO**

AERODROME ELEV 784 ft
HEIGHTS RELATED TO
THR RWY 27 — ELEV 778 ft

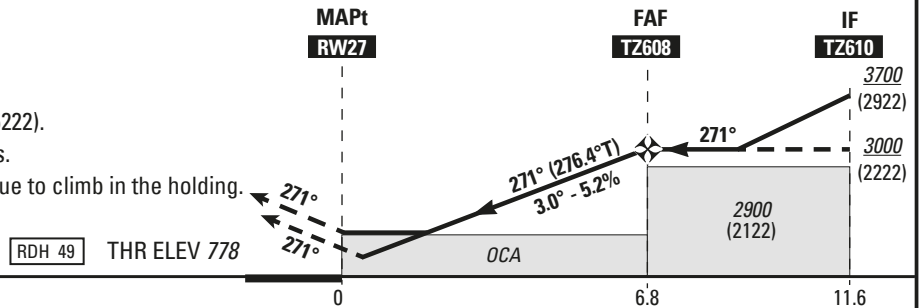
APP 120.350
TWR 132.925
ATIS 133.825

TUZLA / Tuzla (LQTZ)
RNP RWY 27



TRANSITION ALT 10 000

MISSED APPROACH:
Climb to **TZ606**, then turn **right** direct to **BADIB** (MAX IAS 220kt) climbing to **6000** (5222).
At **BADIB**, hold and follow ATC instructions.
If unable to reach **6000** over **BADIB**, continue to climb in the holding.



	LPV	RNAV/VNAV	RNAV	Circling (1)
CAT	OCA (H)	OCA (H)	OCA (H)	OCA (H)
A		1210 (430)		1680 (900)
B		1220 (440)	1260 (480)	2030 (1250)
C		1240 (460)		2280 (1500)
D		1270 (490)	1270 (490)	2390 (1610)

(1) Circling are prohibited South side of the runway 09/27

DIST RW27

NM	2	3	4	5	6
ALT	1460	1780	2100	2420	2740
(HGT)	(682)	(1002)	(1322)	(1642)	(1962)

CHG.: AD elevation

FAF - RW27 (NM)	6.8	Speed Time	70 Kt	85 Kt	100 Kt	115 Kt	130 Kt	145 Kt	160 Kt	185 Kt
			5 min 51	4 min 49	4 min 06	3 min 34	3 min 09	2 min 49	2 min 34	2 min 13
Slope (%)	5.2	VSP (ft/min)	370	450	530	610	680	760	840	970