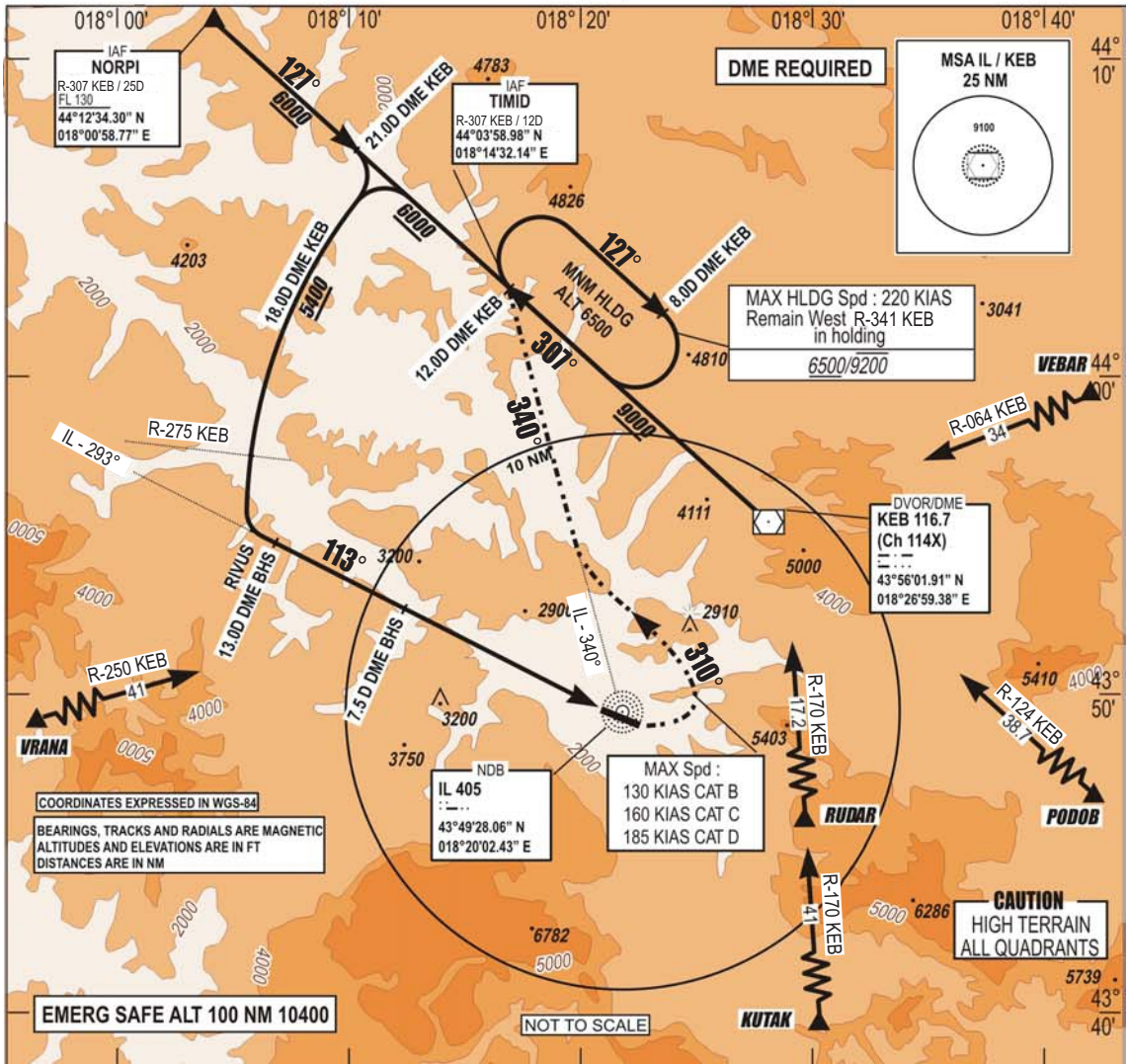


**INSTRUMENT
APPROACH
CHART - ICAO**

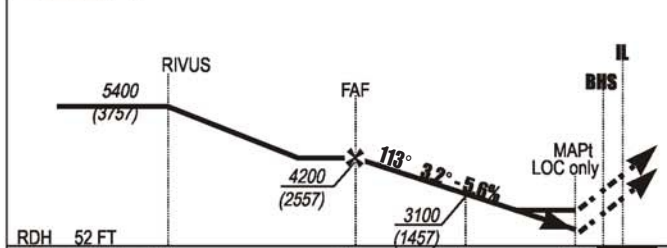
**AERODROME ELEV 1705 FT TRANSITION
HEIGHTS RELATED TO ALTITUDE
THR RWY 11 ELEV 1643 FT 10 000 FT
VAR 5°E (2020)**

**APP 136.450; 119.775
TWR 118.250
GND 121.900
ATIS 124.125**

**SARAJEVO (LQSA)
ILS y RWY 11
MISSED APP 2.5% 3.0%**



**ILS BHS 110.7
DME Ch 44X
GP 330.2**



MISSED APPROACH:
Climb on heading **113°** to **6500**.
Crossing **2750 (1107)** turn **LEFT** on track **310°** intercept **IL - 340°**.
Direct **TIMID** and hold.
Do **NOT TURN** before **MAPt**.

RDH	52 FT
THR → (NM)	12.9
BHS → (NM)	13

RWY	KNOTS	60	120	180	240	300	360
11'	FPM	180	360	540	720	900	1080

CHG: AD ELEV.;

CAT	ILS MAPP		CAT I 2.5%		LOC MAPP		only 2.5%		ILS MAPP		CAT I 3.0%		LOC MAPP		only 3.0%		CIRCLING	
	OCA	OCH	OCA	OCH	OCA	OCH	OCA	OCH	OCA	OCH	OCA	OCH	OCA	OCH	OCA	OCH	OCA	OCH
A	2540	890	2590	940	2300	660	2300	660	2640	990								
B	2550	900	2610	960	2340	700	2340	700	2910	1260								
C	2560	919	2630	980	2440	800	2500	850	5050	3400								
D	2680	1040	-	-	2650	1010	-	-	5820	4170								

* CLIMB RATE 3.0%
CAUTION: MISSED APPROACH
MINIMUM CLIMB RATE TO 6000'
OCA / H published in feet.
CIRCLING : - North of AD only
- Night not authorized

THIS PAGE INTENTIONALLY LEFT BLANK