

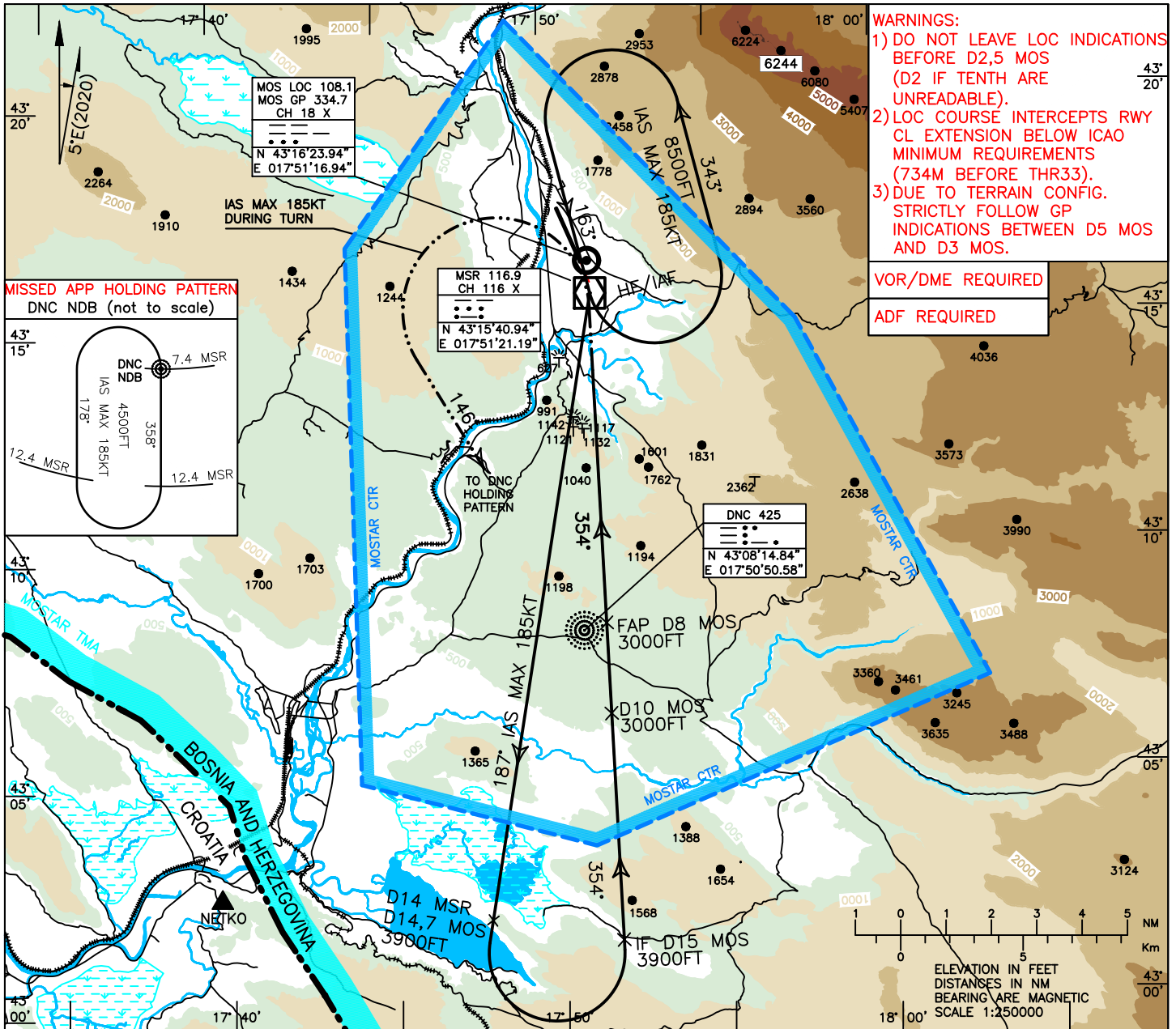
INSTRUMENT APPROACH CHART-ICAO

AD ELEV 174FT
HEIGHTS RELATED TO
FICT. THR ELEV 154FT

TRANSITION ALTITUDE
10 000FT
VAR 5°E (2020)

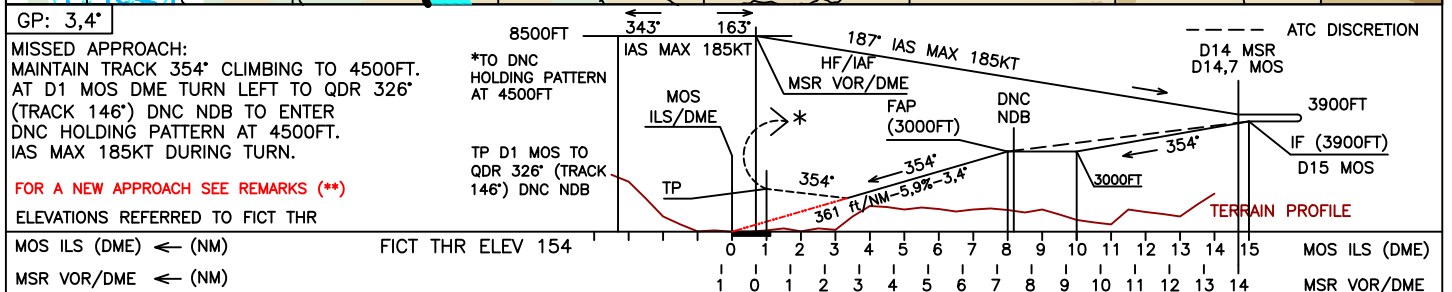
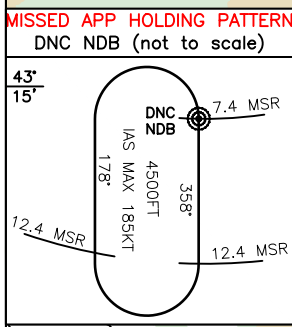
APP 120.225
129.875
TWR 125.550
ATIS 126.225

MOSTAR (LQMO) IGS-Y RWY33 SPECIAL PROCEDURE



- WARNINGS:**
- DO NOT LEAVE LOC INDICATIONS BEFORE D2,5 MOS (D2 IF TENTH ARE UNREADABLE).
 - LOC COURSE INTERCEPTS RWY CL EXTENSION BELOW ICAO MINIMUM REQUIREMENTS (734M BEFORE THR33).
 - DUE TO TERRAIN CONFIG. STRICTLY FOLLOW GP INDICATIONS BETWEEN D5 MOS AND D3 MOS.

VOR/DME REQUIRED
ADF REQUIRED



CAT.	IGS RWY 33 OCA (H)		GS	FT PER MIN	MOS	DME	ALT (HGT)	REMARKS:	MSA 25NM MSR VOR/DME
	OCA (OCH)								
	MACG 2,5%	MACG 4%	100	602	6		2320(2166)	1) MOS LOC/GP/DME EQUIPMENTS ARE CO-LOCATED ABOUT 270M EAST FROM THR 33. 2) LOC COURSE OFFSET 21° (OUTSIDE ICAO REQUIREMENTS). 3) RWY 33 QFU/GEO: 333°/338°.	
	A	1961 (1807)	1279 (1125)	120	722	4	1598(1444)		
B	1971 (1817)	1289 (1135)	140	842	2	876(722)	** ENTERING ON INBOUND LEG OF DNC NDB HOLDING PATTERN RE-CAPTURE LOC COURSE AS SOON AS POSSIBLE AND DESCEND TO 3000FT BEFORE D8 MOS THEN FOLLOW NOMINAL FINAL APPROACH TRACK FOR LANDING. ATC CLEARANCE NEEDED.		
C	1984 (1830)	1302 (1148)	150	903	1	515(361)			
			160	963	0	154(0)			

CHG: MSA UPDATE;

THIS PAGE INENTIONALY LEFT BLANK