

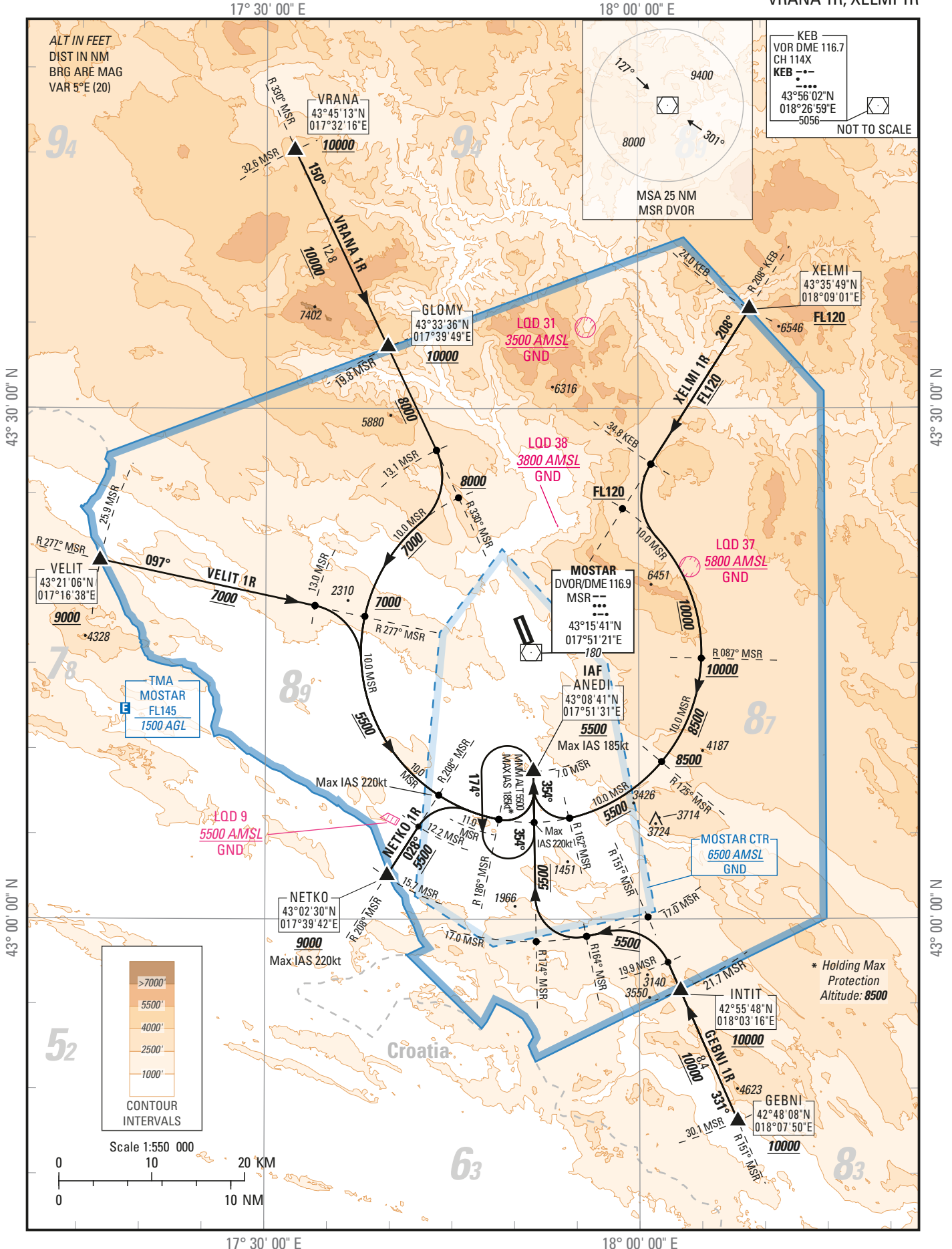
STANDARD ARRIVAL CHART —
INSTRUMENT (STAR) — ICAO

TRANSITIONAL ALTITUDE
10 000 ft

TWR 125.550
APP 120.225
129.875
ATIS 126.225

MOSTAR / MOSTAR (LQMO)
CONV STAR RWY 33

GEBNI 1R, NETKO 1R, VELIT 1R
VRANA 1R, XELMI 1R



THIS PAGE INTENTIONALLY LEFT BLANK