

AIP BOSNIA AND HERZEGOVINA

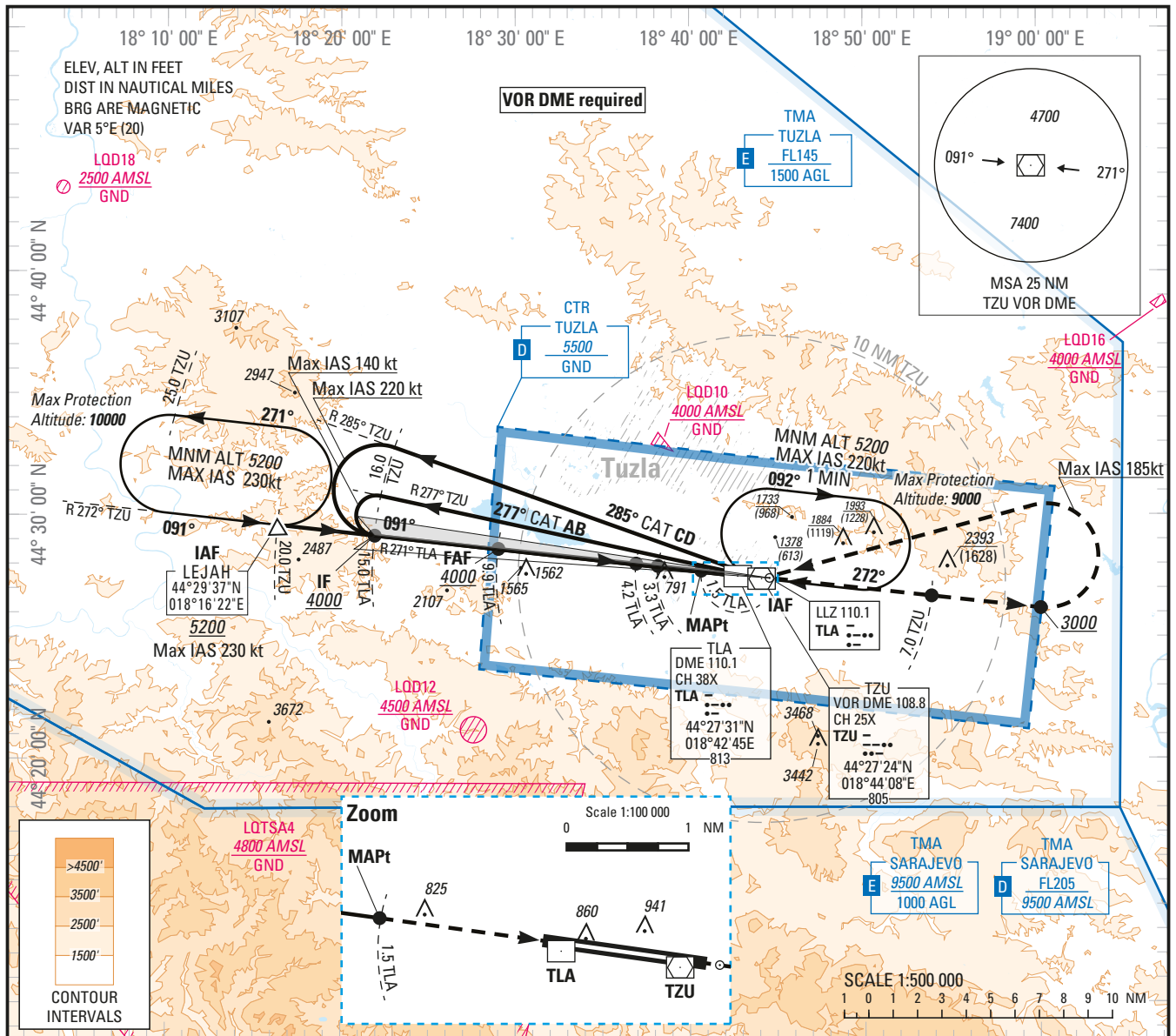
**INSTRUMENT
APPROACH
CHART — ICAO**

AERODROME ELEV 784 ft
HEIGHTS RELATED TO
THR RWY 09 — ELEV 765 ft

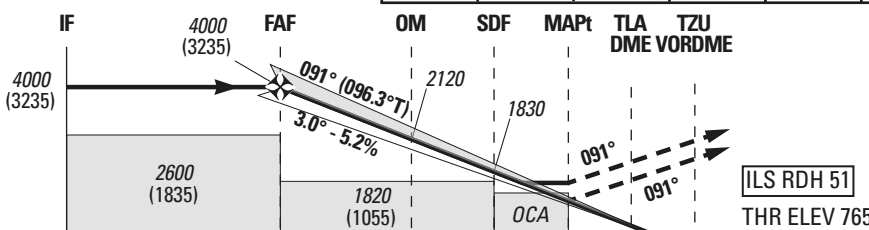
APP 120.350
TWR 132.925
ATIS 133.825

TUZLA /Tuzla (LQTZ)

ILS or LOC RWY 09



TRANSITION ALTITUDE 10000									DME TLA, NM
9	8	7	6	5	4	3	2		
3700 (2935)	3370 (2605)	3040 (2275)	2710 (1945)	2380 (1615)	2050 (1285)	1730 (965)	1410 (645)		ALT (HGT) 3.0° APCH



MISSED APPROACH:
Climb on runway axis.
At 3000 (2235), but not before 7NM TZU, turn left (MAX IAS 185kt) direct to TZU climbing to 5200 (4435) to hold or follow ATC instructions.
If unable to reach 5200 over TZU, continue to climb in the holding.

15.0	9.9	4.2	3.3	1.5	0	0			NM to DME TLA
16.0	10.9	5.2	4.3	2.5					NM to DME TZU
14.8	9.7	4.0	3.1	1.4					NM to THR RWY 09

(1) Circling are prohibited
South side of the runway 09/27

Straight-in Approach	OCA (H)	A	B	C	D										
	Cat I MA 2.5%	1160 (400)	1180 (410)	1180 (420)	1190 (430)										
	Cat I MA 3.0%	990 (230)	1000 (240)	1010 (250)	1020 (260)	GS	kt	70	85	100	115	130	145	160	185
GP INOP MA 2.5%	1350 (580)				FAF-MAPt 8.4 NM	min:s	7:11	5:55	5:01	4:22	3:52	3:28	3:08	2:43	
Circling (1)	1680 (910)	2030 (1270)	2280 (1520)	2390 (1630)	Rate of descent	ft/min	370	450	530	610	680	760	840	970	

CHANGE: NEW CHART

THIS PAGE INTENTIONALLY LEFT BLANK