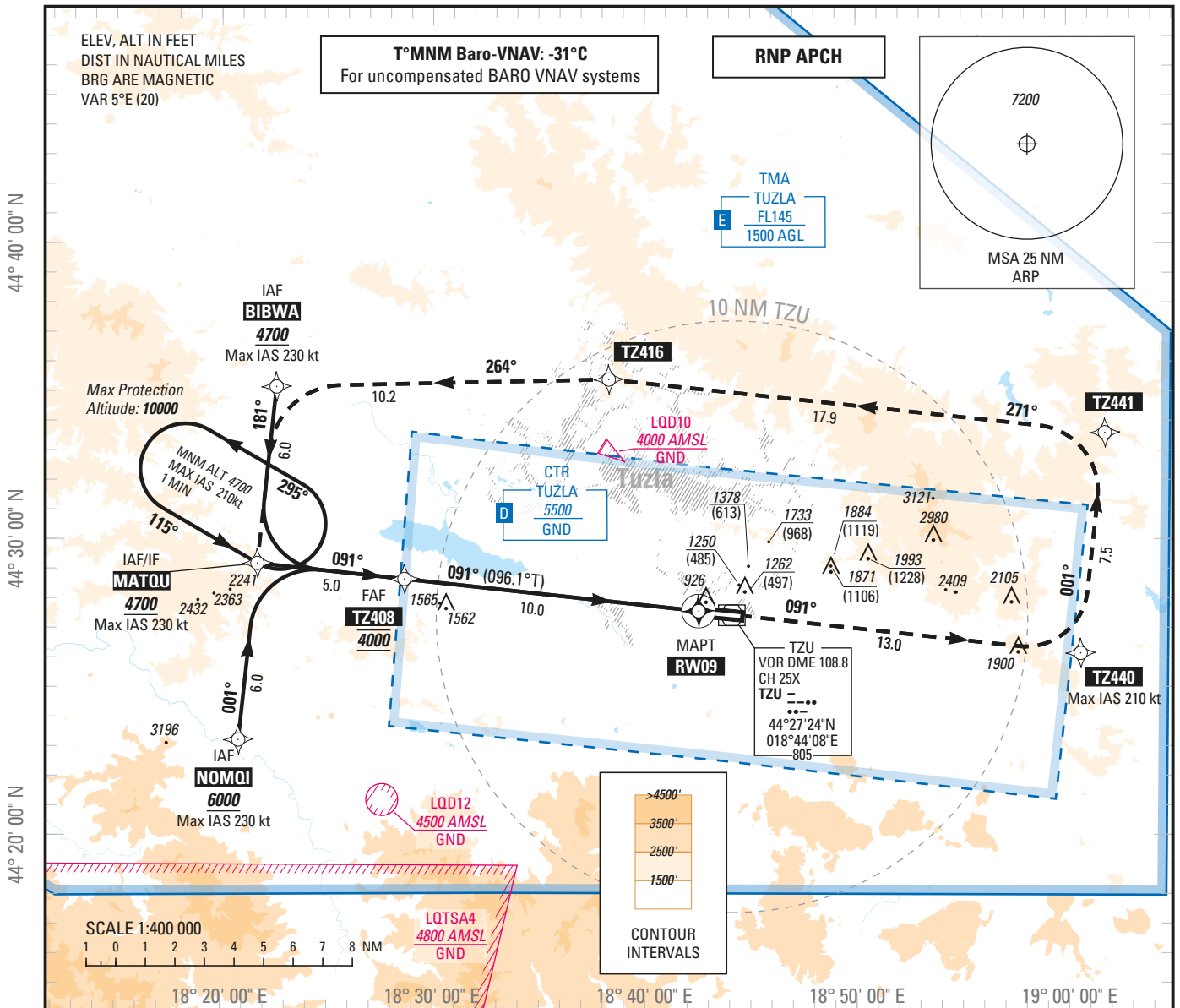


**INSTRUMENT
APPROACH
CHART — ICAO**

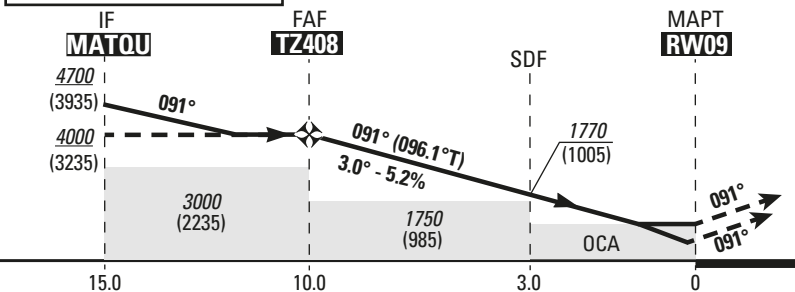
AERODROME ELEV 784 ft
HEIGHTS RELATED TO
THR RWY 09 — ELEV 765 ft

APP 120.350
TWR 132.925
ATIS 133.825

TUZLA / TUZLA (LQTZ)
RNP RWY 09



TRANSITION ALT 10 000



MISSED APPROACH:

Climb to **TZ440** on course **091°M** (Max IAS 210 kt), then to **TZ441**, then to **TZ416**, then to **BIBWA**, then to **MATQU** climbing to **4700** (3935). Max IAS 230 kt. At **MATQU**, hold or follow ATC instructions.

RDH 51 THR ELEV 765

CAT	LPV	LNAV/VNAV			LNAV			Circling (1)			
	MA 2.5%	MA 2.5%	MA 3.0%	MA 4.0%	MA 2.5%	MA 3.0%	MA 4.0%				
A	OCA (H)	OCA (H)	OCA (H)	OCA (H)	OCA (H)	OCA (H)	OCA (H)	OCA (H)			
B		1190 (430)	1100 (340)	1040 (270)	1350 (590)	1240 (480)	1190 (430)	1680 (910)			
C		1200 (440)	1110 (350)	1050 (290)	1370 (610)	1270 (510)	1230 (470)	2030 (1270)			
D		1220 (460)	1130 (370)	1070 (310)	1400 (630)	1300 (540)	1270 (510)	2280 (1520)			
		1250 (480)	1160 (400)	1110 (340)	1420 (650)	1330 (560)	1300 (540)	2390 (1630)			
	FAF - RWY09 (NM)	10.0	Speed Time	70 Kt 8 min 35	85 Kt 7 min 04	100 Kt 6 min 00	115 Kt 5 min 13	130 Kt 4 min 37	145 Kt 4 min 08	160 Kt 3 min 45	185 Kt 3 min 15
	Slope (%)	5.2	VSP (ft/min)	370	450	525	605	685	765	845	975

(1) Circling are prohibited South side of the runway 09/27

DIST RWY09

NM	9	8	7	6	5	4	3	2
ALT (HGT)	3680 (2915)	3360 (2595)	3050 (2285)	2730 (1965)	2410 (1645)	2090 (1325)	1770 (1005)	1450 (685)

CHG: AD elevation