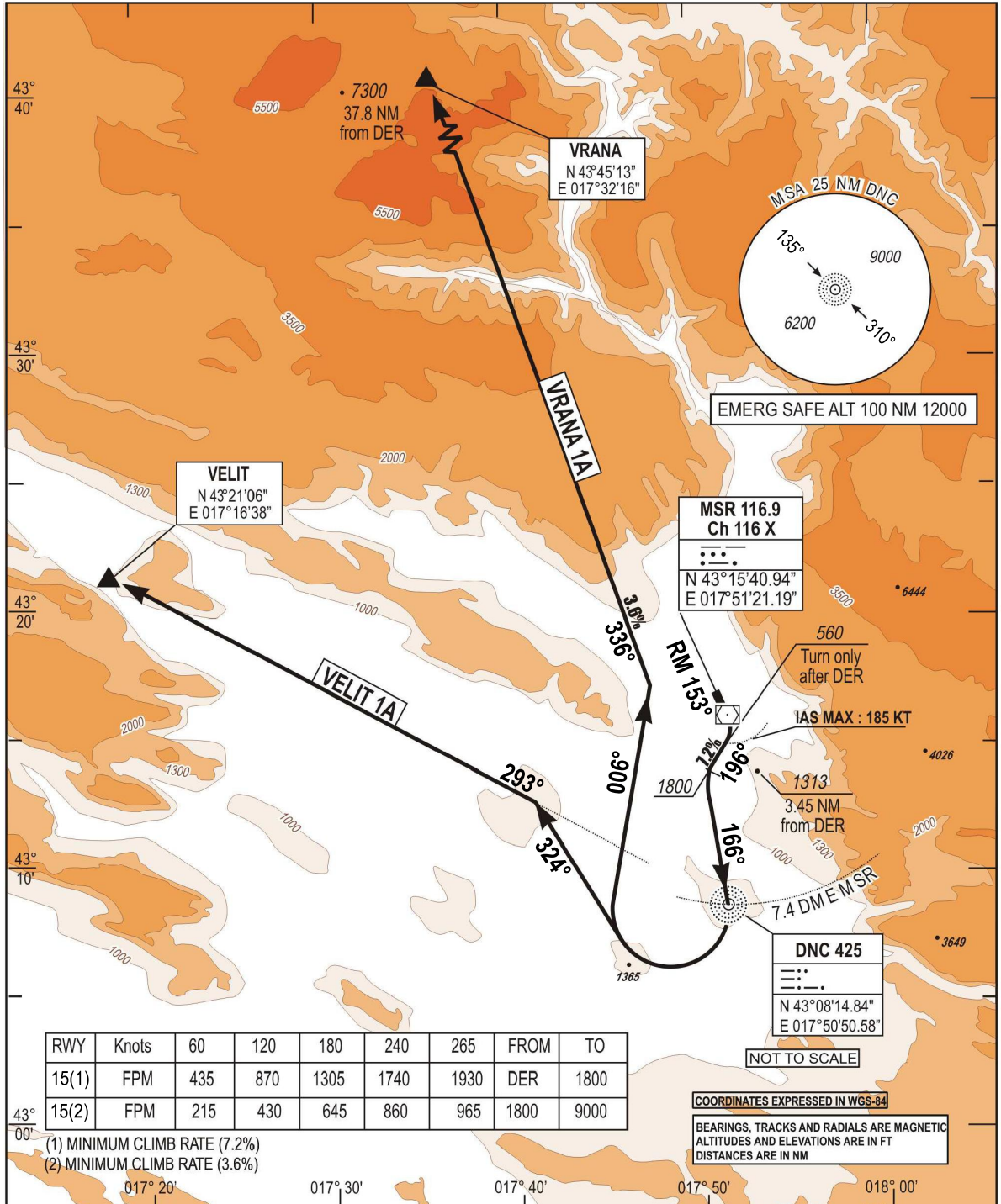


**STANDARD DEPARTURE CHART  
INSTRUMENT (SID) - ICAO**

TRANSITION  
ALTITUDE  
10 000 FT  
VAR 5°E (2020)

TWR 125.550  
ATIS 126.225

**MOSTAR (LQMO)  
VELIT 1A, VRANA 1A  
RWY15**



RWY	Knots	60	120	180	240	265	FROM	TO
15(1)	FPM	435	870	1305	1740	1930	DER	1800
15(2)	FPM	215	430	645	860	965	1800	9000

(1) MINIMUM CLIMB RATE (7.2%)  
(2) MINIMUM CLIMB RATE (3.6%)

COORDINATES EXPRESSED IN WGS-84

BEARINGS, TRACKS AND RADIALS ARE MAGNETIC  
ALTITUDES AND ELEVATIONS ARE IN FT  
DISTANCES ARE IN NM

CHG: MAG VAR, MAG BEARINGS, EDITORIAL CHANGES;

VELIT 1A VRANA 1A	- Climb RM 153° (1) - After DER, when passing 560 FT turn right on track 196° to intercept DNC course 166° inbound - Cross DNC at or above 2670 FT. Thence...
VELIT 1A	...turn right on track 324° to intercept DNC course 293° outbound direct VELIT. Then as cleared by ATC
VRANA 1A	...turn right on track 006° to intercept DNC course 336° outbound direct VRANA. Then as cleared by ATC

(1) Minimum climb rate : 7.2% from DER to 1800 FT. (2) Minimum climb rate: 3.6% (VRANA 1A) after 1800 until 9000 FT.

**THIS PAGE INTENTIONALLY LEFT BLANK**