
BOSNIA AND HERZEGOVINA

Post: Ortiješ bb, P.P. 133
88000 Mostar
Bosnia and Herzegovina
Phone: +387 36 446 224
Fax: +387 36 446 261
Email: aisbih@bhansa.gov.ba
URL: <http://www.bhansa.gov.ba>



SUP 006/2024

Effective Date: 1-Aug-2023

Publication Date: 29-JUN-2023

End Date: UFN

LQTZ – International Airport Tuzla – Trial PBN instrument flight procedures

With this AIP SUP a trial PBN satellite based procedures RNP 1 SID RWY 27 are available for testing purposes at Tuzla Airport. The satellite instrument flight procedures are GNSS based and contain SID flight procedures for RWY 27. Trial PBN procedures are not intended for planning of operations. They are primarily published for flight validation and flyability check purpose with the aim of collecting and developing safety argumetation for PBN implementation in Bosnia and Herzegovina.

**STANDARD DEPARTURE CHART —
INSTRUMENT (SID) — ICAO
CAT A B C D**

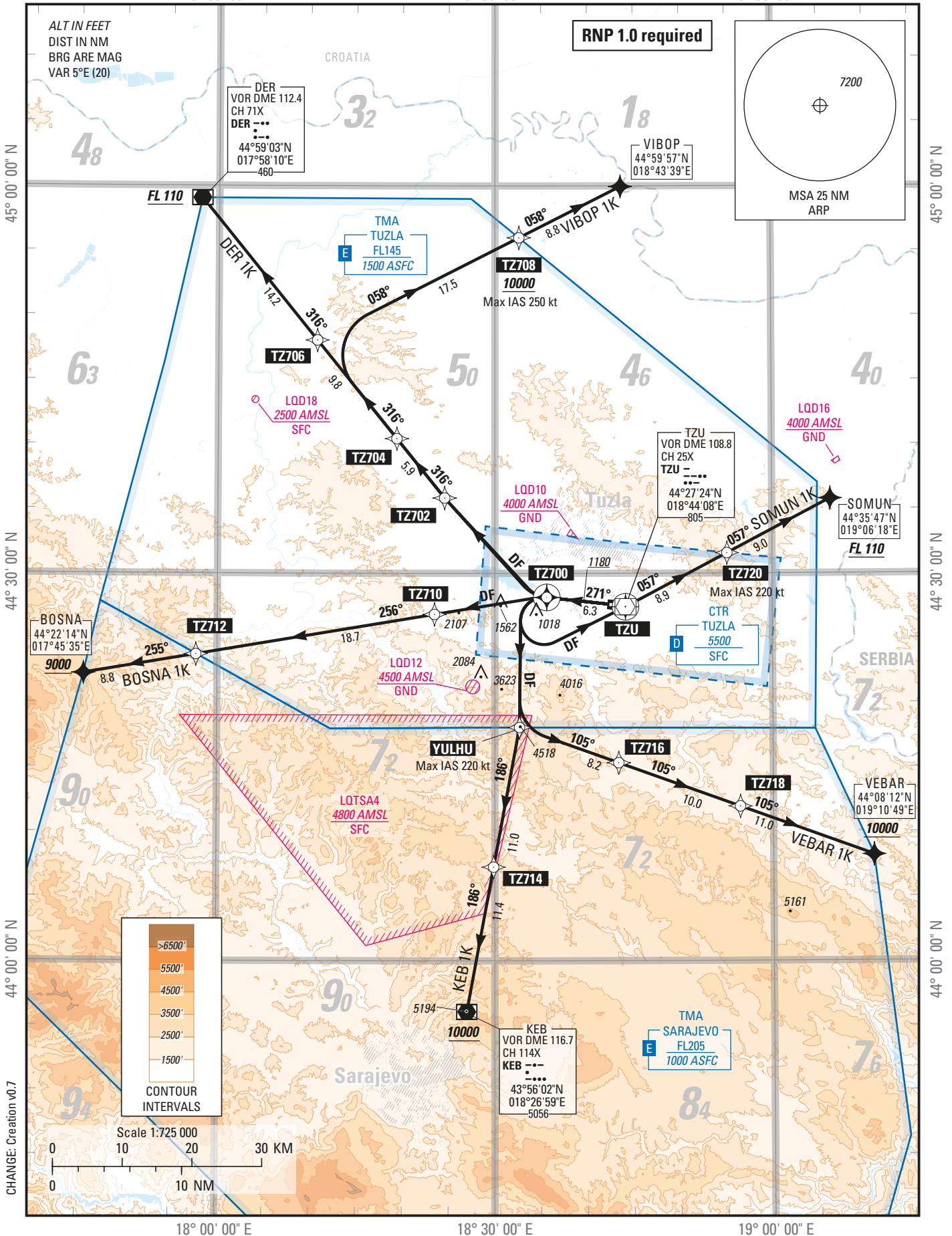
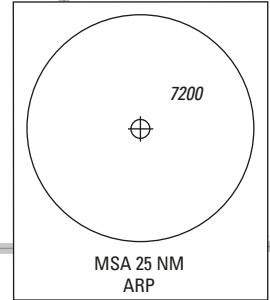
TRANSITION ALTITUDE
10 000 ft

APP 120.350
TWR 132.925

AD ELEV: 779

**TUZLA / TUZLA (LOTZ)
RNP SID RWY 27**
BOSNA 1K, DER 1K, KEB 1K
SOMUN 1K, VEBAR 1K, VIBOP 1K

RNP 1.0 required



CHANGE: Creation v0.7

DEPARTURE TEXTS

For all departures:

Disregarded close-in obstacles:

Tree (841ft) 643m from DER and 84m left RWY axis

Tree (841ft) 658m from DER and 180m left RWY axis

Tree (847ft) 711m from DER and 146m left RWY axis

BOSNA 1K SID

Climb to **1180** on course **271°M** then to **TZ700**. At **TZ700**, turn **left** direct to **TZ710**, then to **TZ712**, then to **BOSNA** at or above **9000**.

DER 1K SID

Climb to **1180** on course **271°M** then to **TZ700**. At **TZ700**, turn **right** direct to **TZ702**, then to **TZ704**, then to **TZ706**, then to **DER** at or above **FL110** (1).

(1) **ATS climb gradient: 4.0%** up to the EN-ROUTE safety altitude. Advise ATC if unable to ensure the ATS climb gradient.

KEB 1K SID

Climb (1) to **1180** on course **271°M** then to **TZ700**. At **TZ700**, turn **left** direct to **YULHU** (Max IAS **220kt**), then to **TZ714**, then to **KEB** at or above **10000**.

(1) **PDG 5.5%** up to **5400** then **3.3%**.

SOMUN 1K SID

Climb (1) to **1180** on course **271°M** then to **TZ700**. At **TZ700**, turn **left** direct to **TZU**, then to **TZ720** (Max IAS **220kt**), then to **SOMUN** at or above **FL110** (2).

(1) **PDG 5.9%** up to **4600** then **3.3%**.

(2) **ATS climb gradient: 5.9%** up to **8500** due to airspace structure. Advise ATC if unable to ensure the ATS climb gradient.

VEBAR 1K SID

Climb (1) to **1180** on course **271°M** then to **TZ700**. At **TZ700**, turn **left** direct to **YULHU** (Max IAS **220kt**), then to **TZ716**, then to **TZ718**, then to **VEBAR** at or above **10000**.

(1) **PDG 5.5%** up to **5100** then **3.3%**.

VIBOP 1K SID

Climb to **1180** on course **271°M** then to **TZ700**. At **TZ700**, turn **right** direct to **TZ702**, then to **TZ704**, then to **TZ706**, then to **TZ708** (Max IAS **250kt**) at or above **10000** then to **VIBOP**.

BOSNA 1K

Seq N°	PT	W/P ID	OverFly	Fix role	TD	RMD VHF	THETA (°) magnetic	RHO Val	RHO uom	CRS Val (°)	CRS Type	TIME val	TIME uom	DIST val	DIST uom	ALT DESC	ALT ONE	ALT TWO	SPD LMT	VRT ANG (°)	NAV PERF	RADIUS val	RADIUS uom	ARC CTR ID	Phase	Transition Identifier	Runway Direction	Magnetic CRS val (°)
10	CA									271.274	MT					+	1180.00 FT [ALT]			1.000 NM				5	RW27	27	NotApplicable	
20	CF	TZ00	Y			TZU	271.274	6.138	NM	271.274	MT			6.344	NM					1.000 NM				5	RW27	27	NotApplicable	
30	DF	TZ70	N																	1.000 NM				5	RW27	27	NotApplicable	
40	TF	TZ71	N							260.634	TT			18.728	NM					1.000 NM				5	RW27	27	255.634	
50	TF	BOSNA	N							260.333	TT			8.822	NM	+	9000.00 FT [ALT]			1.000 NM				5	RW27	27	255.333	

DER 1K

Seq N°	PT	W/P ID	OverFly	Fix role	TD	RMD VHF	THETA (°) magnetic	RHO Val	RHO uom	CRS Val (°)	CRS Type	TIME val	TIME uom	DIST val	DIST uom	ALT DESC	ALT ONE	ALT TWO	SPD LMT	VRT ANG (°)	NAV PERF	RADIUS val	RADIUS uom	ARC CTR ID	Phase	Transition Identifier	Runway Direction	Magnetic CRS val (°)
10	CA									271.274	MT					+	1180.00 FT [ALT]			1.000 NM				5	RW27	27	NotApplicable	
20	CF	TZ00	Y			TZU	271.274	6.138	NM	271.274	MT			6.344	NM					1.000 NM				5	RW27	27	NotApplicable	
30	DF	TZ70	N																	1.000 NM				5	RW27	27	316.157	
40	TF	TZ04	N							321.157	TT			9.900	NM					1.000 NM				5	RW27	27	316.157	
50	TF	TZ06	N							321.066	TT			9.800	NM					1.000 NM				5	RW27	27	316.066	
60	TF	DER	N							320.995	TT			14.172	NM	+	FL110 [STD]			1.000 NM				5	RW27	27	315.995	

KEB 1K

Seq N°	PT	W/P ID	OverFly	Fix role	TD	RMD VHF	THETA (°) magnetic	RHO Val	RHO uom	CRS Val (°)	CRS Type	TIME val	TIME uom	DIST val	DIST uom	ALT DESC	ALT ONE	ALT TWO	SPD LMT	VRT ANG (°)	NAV PERF	RADIUS val	RADIUS uom	ARC CTR ID	Phase	Transition Identifier	Runway Direction	Magnetic CRS val (°)
10	CA									271.274	MT					+	1180.00 FT [ALT]			1.000 NM				5	RW27	27	NotApplicable	
20	CF	TZ00	Y			TZU	271.274	6.138	NM	271.274	MT			6.344	NM					1.000 NM				5	RW27	27	NotApplicable	
30	DF	YUHU	N																	1.000 NM				5	RW27	27	NotApplicable	
40	TF	TZ14	N							190.540	TT			11.000	NM					1.000 NM				5	RW27	27	185.540	
50	TF	KEB	N							190.506	TT			11.412	NM	+	10000.00 FT [ALT]			1.000 NM				5	RW27	27	185.506	

SOMJUN 1K

Seq N°	PT	W/P ID	OverFly	Fix role	TD	RMD VHF	THETA (°) magnetic	RHO Val	RHO uom	CRS Val (°)	CRS Type	TIME val	TIME uom	DIST val	DIST uom	ALT DESC	ALT ONE	ALT TWO	SPD LMT	VRT ANG (°)	NAV PERF	RADIUS val	RADIUS uom	ARC CTR ID	Phase	Transition Identifier	Runway Direction	Magnetic CRS val (°)
10	CA									271.274	MT					+	1180.00 FT [ALT]			1.000 NM				5	RW27	27	NotApplicable	
20	CF	TZ00	Y			TZU	271.274	6.138	NM	271.274	MT			6.344	NM					1.000 NM				5	RW27	27	NotApplicable	
30	DF	TZU	Y																	1.000 NM				5	RW27	27	NotApplicable	
40	TF	TZ70	N							062.030	TT			8.900	NM					1.000 NM				5	RW27	27	057.030	
50	TF	SOMJUN	N							062.159	TT			9.040	NM	+	FL110 [STD]			1.000 NM				5	RW27	27	057.159	

VEBAR 1K

Seq N°	PT	W/P ID	OverFly	Fix role	TD	RMD VHF	THETA (°) magnetic	RHO Val	RHO uom	CRS Val (°)	CRS Type	TIME val	TIME uom	DIST val	DIST uom	ALT DESC	ALT ONE	ALT TWO	SPD LMT	VRT ANG (°)	NAV PERF	RADIUS val	RADIUS uom	ARC CTR ID	Phase	Transition Identifier	Runway Direction	Magnetic CRS val (°)
10	CA									271.274	MT					+	1180.00 FT [ALT]			1.000 NM				5	RW27	27	NotApplicable	
20	CF	TZ00	Y			TZU	271.274	6.138	NM	271.274	MT			6.344	NM					1.000 NM				5	RW27	27	NotApplicable	
30	DF	YUHU	N							104.561	TT			8.159	NM					1.000 NM				5	RW27	27	104.561	
40	TF	TZ76	N							104.685	TT			10.000	NM					1.000 NM				5	RW27	27	104.685	
50	TF	TZ78	N							104.838	TT			11.000	NM	+	10000.00 FT [ALT]			1.000 NM				5	RW27	27	104.838	
60	TF	VEBAR	N							063.087	TT			8.794	NM					1.000 NM				5	RW27	27	063.087	

VIBOP 1K

Seq N°	PT	W/P ID	OverFly	Fix role	TD	RMD VHF	THETA (°) magnetic	RHO Val	RHO uom	CRS Val (°)	CRS Type	TIME val	TIME uom	DIST val	DIST uom	ALT DESC	ALT ONE	ALT TWO	SPD LMT	VRT ANG (°)	NAV PERF	RADIUS val	RADIUS uom	ARC CTR ID	Phase	Transition Identifier	Runway Direction	Magnetic CRS val (°)
10	CA									271.274	MT					+	1180.00 FT [ALT]			1.000 NM				5	RW27	27	NotApplicable	
20	CF	TZ00	Y			TZU	271.274	6.138	NM	271.274	MT			6.344	NM					1.000 NM				5	RW27	27	NotApplicable	
30	DF	TZ02	N																	1.000 NM				5	RW27	27	NotApplicable	
40	TF	TZ04	N							321.157	TT			5.900	NM					1.000 NM				5	RW27	27	316.157	
50	TF	TZ06	N							321.086	TT			9.800	NM					1.000 NM				5	RW27	27	316.086	
60	TF	TZ08	N							062.840	TT			17.466	NM	+	10000.00 FT [ALT]			1.000 NM				5	RW27	27	062.840	
70	TF	VIBOP	N							063.087	TT			8.794	NM					1.000 NM				5	RW27	27	063.087	

ADHP ICAO Identifier	W/P ID	W/P ICAO Code	W/P Type	Latitude	Longitude
LQTZ	BADIB		ICAO	44°37'50.3370"N	018°41'19.4590"E
LQTZ	BIBWA		ICAO	44°35'10.0400"N	018°22'36.1240"E
LQTZ	BOSNA		ICAO	44°22'14.0000"N	017°45'35.0000"E
LQTZ	DER		ICAO	44°59'02.8600"N	017°58'10.0600"E
LQTZ	EDHUG		ICAO	44°41'27.2760"N	018°44'00.0270"E
LQTZ	IMEFE		ICAO	44°21'11.0280"N	018°59'45.6390"E
LQTZ	KEB		ICAO	43°56'01.9100"N	018°26'59.3800"E
LQTZ	MATQU		ICAO	44°29'12.0440"N	018°21'43.1980"E
LQTZ	NOMQI		ICAO	44°23'14.0360"N	018°20'50.4520"E
LQTZ	RW09		ADHP	44°27'35.5500"N	018°42'33.3500"E
LQTZ	RW27		ADHP	44°27'26.7200"N	018°44'25.2900"E
LQTZ	SANWI		ICAO	44°50'59.2960"N	018°19'19.2830"E
LQTZ	SOMUN		ICAO	44°35'47.0000"N	019°06'18.0000"E
LQTZ	TZ408		ADHP	44°28'40.3140"N	018°28'39.8850"E
LQTZ	TZ414		ADHP	44°53'00.6510"N	018°37'43.2310"E
LQTZ	TZ416		ADHP	44°35'23.8690"N	018°36'54.9910"E
LQTZ	TZ424		ADHP	44°13'47.9710"N	018°22'59.0590"E
LQTZ	TZ426		ADHP	44°15'19.7580"N	018°43'21.5880"E
LQTZ	TZ428		ADHP	44°11'46.7050"N	018°57'06.1220"E
LQTZ	TZ430		ADHP	44°25'53.6810"N	018°04'25.9050"E
LQTZ	TZ440		ADHP	44°26'08.8830"N	019°00'35.4670"E
LQTZ	TZ441		ADHP	44°33'35.9940"N	019°01'46.5670"E
LQTZ	TZ510		ADHP	44°27'00.2660"N	018°49'58.3150"E
LQTZ	TZ522		ADHP	44°49'26.1280"N	018°43'50.9810"E
LQTZ	TZ530		ADHP	44°18'01.1970"N	018°56'07.1300"E
LQTZ	TZ532		ADHP	44°09'21.2100"N	018°44'34.4900"E
LQTZ	TZ540		ADHP	44°22'30.7530"N	018°39'12.2000"E
LQTZ	TZ544		ADHP	44°20'28.3550"N	018°05'57.1960"E
LQTZ	TZ550		ADHP	44°35'30.1850"N	018°44'10.0650"E
LQTZ	TZ560		ADHP	44°17'58.3590"N	019°02'03.6470"E
LQTZ	TZ606		ADHP	44°28'05.8950"N	018°36'05.5960"E
LQTZ	TZ608		ADHP	44°26'41.4250"N	018°53'53.4050"E
LQTZ	TZ610		ADHP	44°26'09.0950"N	019°00'32.8530"E
LQTZ	TZ612		ADHP	44°31'07.1680"N	019°01'20.1950"E
LQTZ	TZ614		ADHP	44°35'44.5370"N	018°59'12.9040"E
LQTZ	TZ616		ADHP	44°43'49.3190"N	018°41'57.0410"E
LQTZ	TZ618		ADHP	44°43'22.1690"N	018°50'20.5580"E
LQTZ	TZ620		ADHP	44°50'09.8570"N	018°42'37.0220"E
LQTZ	TZ622		ADHP	44°46'00.8940"N	018°24'48.9350"E
LQTZ	TZ624		ADHP	44°54'31.6020"N	018°07'27.5120"E
LQTZ	TZ626		ADHP	44°15'52.7130"N	019°04'17.3930"E
LQTZ	TZ628		ADHP	44°17'11.5510"N	018°54'30.9230"E
LQTZ	TZ630		ADHP	44°10'16.3490"N	018°45'27.7020"E
LQTZ	TZ632		ADHP	44°21'31.6070"N	018°44'07.3930"E
LQTZ	TZ634		ADHP	44°21'47.9340"N	018°26'00.3810"E
LQTZ	TZ700		ADHP	44°28'08.1250"N	018°35'36.9170"E
LQTZ	TZ702		ADHP	44°35'50.0380"N	018°24'33.8330"E
LQTZ	TZ704		ADHP	44°40'25.6270"N	018°19'22.6880"E
LQTZ	TZ706		ADHP	44°48'02.8400"N	018°10'44.0720"E
LQTZ	TZ708		ADHP	44°55'59.0870"N	018°32'36.6360"E
LQTZ	TZ710		ADHP	44°26'49.3100"N	018°23'28.7870"E
LQTZ	TZ712		ADHP	44°23'43.5260"N	017°57'42.4440"E
LQTZ	TZ714		ADHP	44°07'15.2410"N	018°29'52.1610"E
LQTZ	TZ716		ADHP	44°15'19.7580"N	018°43'21.5880"E
LQTZ	TZ718		ADHP	44°11'56.8880"N	018°56'26.8960"E
LQTZ	TZ720		ADHP	44°31'34.2470"N	018°55'06.7890"E
LQTZ	TZU		ICAO	44°27'24.3300"N	018°44'07.5300"E
LQTZ	VEBAR		ICAO	44°08'12.0000"N	019°10'49.0000"E
LQTZ	VIBOP		ICAO	44°59'57.0000"N	018°43'39.0000"E
LQTZ	WIXFI		ICAO	44°45'59.1330"N	018°08'31.9570"E
LQTZ	YULHU		ICAO	44°18'04.1600"N	018°32'39.7700"E